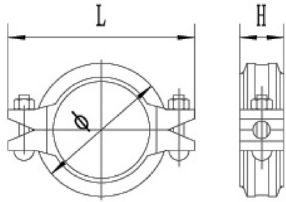
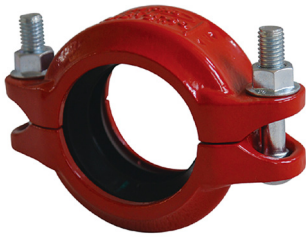


Couplings and Fittings
Catalogue

Rigid Coupling Model: XGQT01



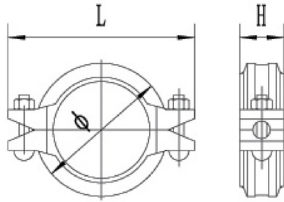
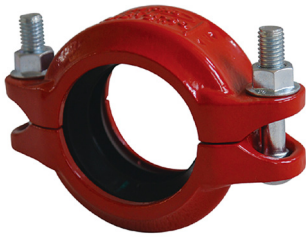
Product Description

FIS MENA Model XGQT01 is Ductile Iron Grooved Rigid Couplings. XGQT01 is designed for use on schedule 10, schedule 30, schedule 40, GB/T3091 and WGalweld 7 pipe. Sizes of XGQT01 from 25mm - 300mm / 1" - 12". Pressure of XGQT01 conform to the list from UL and FM. Galvanised option available upon request.

Technical Data

Part No.	Nominal Size mm/in	Pipe O.D. mm/in	Working Pressure PSI/MPa	Bolt Size No. - Size mm	Dimensions L mm/in			UL	FM
					Ø	L	H		
XGQT01-25	25 1	33.7 1.327	500 3.45	2 - M10 x 45	57.5 2.264	99 3.898	43.5 1.713	UL	FM
XGQT01-32	32 1 ¼	42.4 1.669	500 3.45	2 - M10 x 45	70 2.756	106 4.173	44 1.732	UL	FM
XGQT01-40	40 1 ½	48.3 1.900	500 3.45	2 - M10 x 45	73 2.874	108 4.252	44 1.732	UL	FM
XGQT01-50	50 2	60.3 2.375	500 3.45	2 - M10 x 55	87 3.425	123 4.843	44 1.732	UL	FM
XGQT01-65-1	65 2 ½	73.0 2.875	500 3.45	2 - M10 x 55	100 3.937	138 5.433	44 1.732	UL	FM
XGQT01-65-2	65 2 ½	76.1 3.000	500 3.45	2 - M10 x 55	103 4.055	142 5.591	45 1.772	UL	FM
XGQT01-80	80 3	88.9 3.500	500 3.45	2 - M12 x 60	117 4.606	166 6.535	45 1.772	UL	FM
XGQT01-100-1	100 4	108.0 4.250	500 3.45	2 - M12 x 65	137 5.393	188 7.401	48 1.889	UL	FM
XGQT01-100-2	100 4	114.3 4.500	500 3.45	2 - M12 x 65	139 5.472	190 7.480	49 1.929	UL	FM
XGQT01-125-1	125 5	133.0 5.250	300 2.07	2 - M12 x 75	162.6 6.401	216 8.504	48 1.889	UL	FM
XGQT01-125-2	125 5	139.7 5.500	400 2.75	2 - M12 x 75	168 6.614	218 8.583	49 1.929	UL	FM
XGQT01-125-3	125 5	141.3 5.563	400 2.75	2 - M12 x 75	167 6.575	219 8.622	49 1.929	UL	FM
XGQT01-150-1	150 6	159.0 6.250	300 2.07	2 - M12 x 75	189.4 7.456	240 9.448	48 1.889	UL	FM
XGQT01-150-2	150 6	165.1 6.500	400 2.75	2 - M12 x 75	193 7.598	241 9.488	49 1.929	UL	FM
XGQT01-150-3	150 6	168.3 6.625	400 2.75	2 - M12 x 75	198.5 7.815	249 9.803	50 1.969	UL	FM
XGQT01-200	200 8	219.1 8.625	300 2.07	2 - M16 x 85	253 9.961	320 12.598	59 2.323	UL	FM
XGQT01-250	250 10	273 10.748	300 2.07	2 - M22 x 130	335 13.189	426 16.772	68 2.677	UL	FM
XGQT01-300	300 12	323.9 12.752	300 2.07	2 - M22 x 130	380 14.96	470 18.504	65 2.559	UL	FM

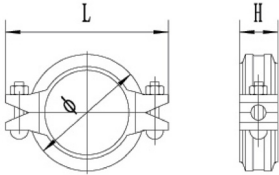
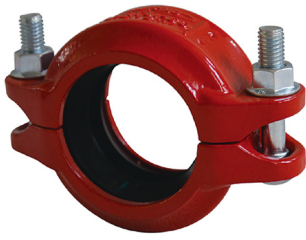
Rigid Coupling Model: XGQT01P



Technical Data

Part No.	Nominal Size mm/in	Pipe O.D. mm/ in	Working Pressure PSI/MPa	Bolt Size No. - Size mm	Dimensions L mm/in			UL	FM
					Ø	L	H		
XGQT01P-125-1	125 5	139.7 5.500	500 3.45	2 - M16 x 85	169.5 6.673	229 9.016	52 2.047	UL	FM
XGQT01P-125-2	125 5	141.3 5.563	500 3.45	2 - M16 x 85	170.5 6.713	232 9.134	52 2.047	UL	FM
XGQT01P-150-1	150 6	165.1 6.50	500 3.45	2 - M16 x 85	195 7.677	256 10.079	52 2.047	UL	FM
XGQT01P-150-2	150 6	168.3 6.625	500 3.45	2 - M16 x 85	202.5 7.972	263.5 10.374	52 2.047	UL	FM
XGQT01P-200	200 8	219.1 8.625	500 3.45	2 - M20 x 120	256.5 10.098	336 13.228	62 2.441	UL	FM
XGQT01P-250	250 10	273.0 10.750	500 3.45	2 - M24 x 130	326 12.835	410 16.142	65 2.441	UL	FM
XGQT01P-300	300 12	323.9 12.750	500 3.45	2 - M24 x 130	384 15.118	472 18.583	66 2.598	UL	FM

Flexible Coupling Model: XGQT02



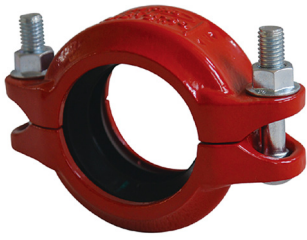
Product Description

FIS MENA Model XGQT02 is Ductile Iron Grooved Flexible Couplings. XGQT02 is designed for use on schedule 10, schedule 30, schedule 40, GB/T3091 and WGalweld 7 pipe. Sizes of XGQT02 from 25mm - 300mm / 1"-12". Pressure of XGQT02 conform to the list from UL and FM. Galvanised option available upon request.

Technical Data

Part No.	Nominal Size mm/in	Pipe O.D. mm/in	Working Pressure PSI/MPa	Bolt Size No. - Size mm	Dimensions L mm/in			UL	FM
					Ø	L	H		
XGQT02-25	25 1	33.7 1.327	500 3.45	2 - M10 x 45	60 2.362	98 3.858	43.5 1.713	UL	FM
XGQT02-32	32 1 ¼	42.4 1.669	500 3.45	2 - M10 x 45	67 2.638	106 4.173	44 1.732	UL	FM
XGQT02-40	40 1 ½	48.3 1.900	500 3.45	2 - M10 x 45	73 2.874	108 4.252	44 1.732	UL	FM
XGQT02-50	50 2	60.3 2.375	500 3.45	2 - M10 x 55	87 3.425	123 4.843	44 1.732	UL	FM
XGQT02-65-1	65 2 ½	73.0 2.875	500 3.45	2 - M10 x 55	100 3.937	138 5.433	44 1.732	UL	FM
XGQT02-65-2	65 2 ½	76.1 3.000	500 3.45	2 - M10 x 55	103 4.055	142 5.591	45 1.772	UL	FM
XGQT02-80	80 3	88.9 3.500	500 3.45	2 - M12 x 60	117 4.606	166 6.535	45 1.772	UL	FM
XGQT02-100-1	100 4	108.0 4.250	500 3.45	2 - M12 x 65	137 5.393	188 7.401	48 1.889	UL	FM
XGQT02-100-2	100 4	114.3 4.500	500 3.45	2 - M12 x 65	139 5.472	190 7.480	49 1.929	UL	FM
XGQT02-125-1	125 5	133.0 5.250	300 2.07	2 - M12 x 75	162.6 6.401	216 8.504	48 1.889	UL	FM
XGQT02-125-2	125 5	139.7 5.500	400 2.75	2 - M12 x 75	168 6.614	218 8.583	49 1.929	UL	FM
XGQT02-125-3	125 5	141.3 5.563	400 2.75	2 - M12 x 75	167 6.575	219 8.622	49 1.929	UL	FM
XGQT02-150-1	150 6	159.0 6.250	300 2.75	2 - M12 x 75	189.4 7.456	240 9.448	48 1.889	UL	FM
XGQT02-150-2	150 6	165.1 6.500	400 2.07	2 - M12 x 75	193 7.598	241 9.488	49 1.929	UL	FM
XGQT02-150-3	150 6	168.3 6.625	400 2.75	2 - M12 x 75	198.5 7.815	249 9.803	50 1.969	UL	FM
XGQT02-200	200 8	219.1 8.625	300 2.07	2 - M16 x 85	253 9.961	320 12.598	59 2.323	UL	FM
XGQT02-250	250 10	273 10.748	300 2.07	2 - M22 x 130	317 12.480	401 10.787	63 2.480	UL	FM
XGQT02-300	300 12	323.9 12.752	300 2.07	2 - M22 x 130	375 14.764	455 17.913	64 2.520	UL	FM

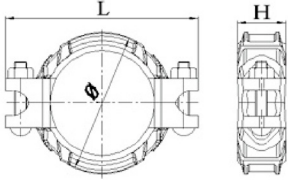
Flexible Coupling Model: XGQT02P



Technical Data

Part No.	Nominal Size mm/in	Pipe O.D. mm/in	Working Pressure PSI/MPa	Bolt Size No. - Size mm	Dimensions L mm/in			UL	FM
					Ø	L	H		
XGQT02P-125-1	125 5	139.7 5.500	500 3.45	2 - M16 x 85	169.5 6.673	229 9.016	52 2.047	UL	FM
XGQT02P-125-2	125 5	141.3 5.563	500 3.45	2 - M16 x 85	170.5 6.713	232 9.134	52 2.047	UL	FM
XGQT02P-150-1	150 6	165.1 6.500	500 3.45	2 - M16 x 85	195 7.677	256 10.079	52 2.047	UL	FM
XGQT02P-150-2	150 6	168.3 6.625	500 3.45	2 - M16 x 85	202.5 7.972	263.5 10.374	52 2.047	UL	FM
XGQT02P-200	200 8	219.1 8.625	500 3.45	2 - M20 x 120	256.5 10.098	336 13.228	62 2.441	UL	FM
XGQT02P-250	250 10	273.0 10.750	500 3.45	2 - M24 x 130	326 12.835	410 16.142	65 2.441	UL	FM
XGQT02P-300	300 12	323.9 12.750	500 3.45	2 - M24 x 130	384 15.118	472 18.583	66 2.598	UL	FM

Flexible Coupling Model: XGQT02K

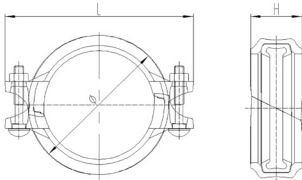


Technical Data

Part No.	Nominal Size mm/in	Pipe O.D. mm/in	Working Pressure PSI/MPa	Dimensions L mm/in			UL	FM
				Ø	L	H		
XGQT02K-50	50 2	60.3 2.375	500 3.45	44 1.732	136 5.354	46 1.811	UL	FM
XGQT02K-80	80 3	88.9 3.500	500 3.45	59 2.323	161 6.339	46 1.811	UL	FM
XGQT02K-100	100 4	114.3 4.500	500 3.45	74 2.913	204 8.031	51 2.008	UL	FM
XGQT02K-150	150 6	168.3 6.625	500 3.45	103 4.055	270 10.630	54 2.126	UL	FM
XGQT02K-200	200 8	219.1 8.625	400 2.76	135 5.331	355 13.976	64 2.520	UL	FM
XGQT02K-250	250 10	273 10.75	400 2.76	163 6.417	418 16.457	67 2.638	UL	FM
XGQT02K-300	300 12	323.9 12.75	400 2.76	189 7.441	464 18.268	68 2.677	UL	FM

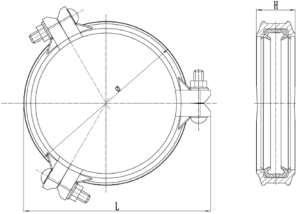
The specific items list shall be subject to the public notice of FM and UL website.

Angle Pad Coupling Model: 31A



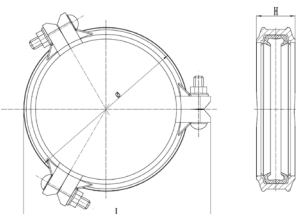
Part No.	Nominal Size mm/in	Pipe O.D. mm/in	Working Pressure PSI/MPa	Bolt Size No. - Size mm	Dimensions L mm/in			UL	FM
					Ø	L	H		
31A-25	25 1	33.7 1.327	300 2.07	2 - M10 x 45	57.4 2.260	98 3.858	47 1.850	UL	
31A-32	32 1 ¼	42.4 1.669	300 2.07	2 - M10 x 55	65 2.559	106 4.173	47 1.850	UL	FM
31A-40	40 1 ½	48.3 1.900	300 2.07	2 - M10 x 55	70.5 2.776	111 4.370	47 1.850	UL	FM
31A-50	50 2	60.3 2.375	300 2.07	2 - M10 x 60	85 3.346	123.5 4.862	47 1.850	UL	FM
31A-65-1	65 2 ½	73.0 2.875	300 2.07	2 - M10 x 60	99 3.900	137.5 5.413	47 1.850	UL	FM
31A-65-2	65 2 ½	76.1 3.000	300 2.07	2 - M10 x 60	102 4.016	141.5 5.571	47 1.850	UL	FM
31A-80	80 3	88.9 3.500	300 2.07	2 - M12 x 65	117 4.606	164.5 6.476	47.5 1.870	UL	FM
31A-100-1	100 4	108 4.250	300 2.07	2 - M12 x 70	138.5 5.453	186 7.323	52 2.047	UL	FM
31A-100-2	100 4	114.3 4.500	300 2.07	2 - M12 x 70	140.5 5.531	188 7.402	52 2.047	UL	FM
31A-125-1	125 5	139.7 5.500	300 2.07	2 - M12 x 75	167.5 6.595	219 8.622	52 2.047	UL	FM
31A-125-2	125 5	141.3 5.563	300 2.07	2 - M12 x 75	167.5 6.595	219 8.622	52 2.047	UL	FM
31A-150-1	150 6	159.0 6.250	300 2.07	2 - M12 x 75	190 7.480	240 9.449	52.5 2.067	UL	FM
31A-150-2	150 6	165.1 6.500	300 2.07	2 - M12 x 75	193 7.598	243 9.567	52.5 2.067	UL	FM
31A-150-3	150 6	168.3 6.625	300 2.07	2 - M12 x 75	200 7.874	249 9.803	52.5 2.067	UL	FM
31A-200-1	200 8	216.3 8.516	300 2.07	2 - M16 x 110	251 9.882	312 12.283	64 2.520	UL	FM
31A-200-2	200 8	219.1 8.625	300 2.07	2 - M16 x 110	251 9.882	320 12.598	64 2.520	UL	FM
31A-250-1	250 10	267.0 10.512	300 2.07	2 - M22 x 155	307 12.087	392 15.433	66 2.600	UL	FM
31A-250-2	250 10	273.0 10.748	300 2.07	2 - M22 x 155	316 12.441	400 15.748	66 2.600	UL	FM
31A-300	300 12	323.9 12.752	301 2.07	2 - M24 x 165	376.5 14.823	464 18.268	66 2.600	UL	FM

Heavy Duty Rigid Coupling Model: XGQT01H



Technical Data									
Part No.	Nominal Size mm/in	Pipe O.D. mm/in	Working Pressure PSI/MPa	Bolt Size No. - Size mm	Dimensions L mm/in			UL	FM
					Ø	L	H		
XGQT01H-50	50 2	60.3 2.375	500 3.45	2 - M10 x 55	88.6 3.488	129.5 5.098	46 1.811	UL	
XGQT01H-65	65 2 ½	76.1 3.000	500 3.45	2 - M10 x 55	107.8 4.244	149 5.866	46 1.811	UL	
XGQT01H-80	80 3	88.9 3.500	500 3.45	2 - M12 x 75	120.8 4.756	171 6.732	46 1.811	UL	
XGQT01H-100	100 4	114.3 4.500	500 3.45	2 - M12 x 75	146 5.748	197 7.756	51 2.008	UL	
XGQT01H-125	125 5	139.7 5.500	450 3.1	2 - M16 x 100	174.8 6.882	234 9.213	51 2.008	UL	
XGQT01H-150	150 6	165.1 6.500	450 3.1	2 - M16 x 100	200.2 7.882	260.5 10.256	53 2.087	UL	
XGQT01H-200	200 8	216.3 8.516	300 2.07	2 - M20 x 120	261.4 10.291	333 13.110	63 2.480	UL	
XGQT01H-250	250 10	267.4 10.528	300 2.07	2 - M22 x 130	318.6 12.543	395 15.551	64 2.520	UL	
XGQT01H-300	300 12	318.5 12.539	300 2.07	2 - M22 x 165	371 14.606	451 17.756	64 2.520	UL	
XGQT01H-350	350 14	355.6 14	300 2.07	3 - M22 x 100	406 15.984	461 18.150	75 2.953	UL	
XGQT01H-400	400 16	406.4 16	300 2.07	3 - M22 x 100	458.6 18.055	513.8 20.228	75 2.953	UL	
XGQT01H-450	450 18	457.2 18	250 1.72	3 - M22 x 100	515 20.276	571 22.480	82 3.228	UL	
XGQT01H-500	500 20	508 20	250 1.72	4 - M24 x 130	565 22.244	690 27.165	79 3.110	UL	
XGQT01H-600	600 24	609.6 24	250 1.72	4 - M24 x 130	676 26.614	786.6 30.969	79 3.110	UL	

Heavy Duty Flexible Coupling Model: XGQT02H

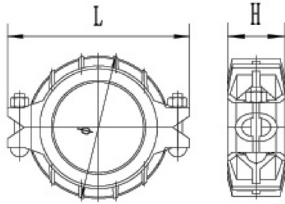


Technical Data									
Part No.	Nominal Size mm/in	Pipe O.D. mm/in	Working Pressure PSI/MPa	Bolt Size No. - Size mm	Dimensions L mm/in			UL	FM
					Ø	L	H		
XGQT02H-350	350 14	355.6 14	300 2.07	3 - M22 x 100	406 15.984	454 17.874	75 2.953	UL	
XGQT02H-400	400 16	406.4 16	250 1.72	3 - M22 x 100	458 18.031	507 19.961	75 2.953	UL	
XGQT02H-450	450 18	457.2 18	250 1.72	3 - M22 x 100	507 19.961	535 21.063	82 3.228	UL	
XGQT02H-500	500 20	508 20	250 1.72	4 - M24 x 130	564 22.205	663 26.102	79 3.11	UL	
XGQT02H-600	600 24	609.6 24	250 1.72	4 - M24 x 130	672 26.457	774 30.472	79 3.11	UL	

rhinotek

DESIGNED, INNOVATED &
ENGINEERED IN AUSTRALIA

Reducing Flexible Coupling Model: XGQT02B



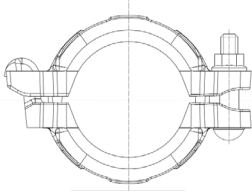
Product Description

FIS MENA Model XGQT02B is Ductile Iron Grooved Reducing Flexible Couplings. XGQT02B is designed for use on schedule 10, schedule 40 and GB/T3091 pipe. Sizes of XGQT02B from 50mm - 200mm / 2" - 8". Pressure of XGQT02B conform to the list from UL and FM. Galvanised option available upon request.

Technical Data

Part No.	Nominal Size mm/in	Pipe O.D. mm/in	Working Pressure PSI/MPa	Bolt Size No. - Size mm	Dimensions L mm/in			UL	FM
					Ø	L	H		
XGQT02B-40X32	40 x 32 1 1/2 x 1 1/4	48.3 x 42.4 1.900 x 1.669	300 2.07	2 - M10 x 45	73.6 2.899	111 4.370	44 1.732	UL	FM
XGQT02B-50X40	50 x 40 2 x 1 1/2	60.3 x 48.3 2.375 x 1.900	300 2.07	2 - M10 x 55	90 3.543	129 5.079	47 1.850	UL	FM
XGQT02B-65X40-1	65 x 40 2 1/2 x 1 1/2	73.0 x 48.3 2.874 x 1.900	300 2.07	2 - M10 x 55	101 3.976	137 5.394	48 1.890	UL	FM
XGQT02B-65X50-1	65 x 50 2 1/2 x 2	73.0 x 60.3 2.874 x 2.375	300 2.07	2 - M10 x 55	101 3.976	137 5.394	48 1.890	UL	FM
XGQT02B-65X40-2	65 x 40 2 1/2 x 1 1/2	76.1 x 48.3 2.996 x 1.900	300 2.07	2 - M10 x 55	105 4.134	140 5.512	48 1.890	UL	FM
XGQT02B-65X50-2	65 x 50 2 1/2 x 2	76.1 x 60.3 2.996 x 2.375	300 2.07	2 - M10 x 55	105 4.134	140 5.512	48 1.890	UL	FM
XGQT02B-65X65	65 x 65 2 1/2 x 2 1/2	76.1 x 73.0 2.996 x 2.874	300 2.07	2 - M10 x 55	100.4 3.953	141 5.551	47 1.850	UL	FM
XGQT02B-80X40	80 x 40 3 x 1 1/2	88.9 x 48.3 3.500 x 1.900	300 2.07	2 - M12 x 65	120 4.724	164 6.457	48 1.890	UL	FM
XGQT02B-80X50	80 x 50 3 x 2	88.9 x 60.3 3.500 x 2.375	300 2.07	2 - M12 x 65	120 4.724	164 6.457	48 1.890	UL	FM
XGQT02B-80X65-1	80 x 65 3 x 2 1/2	88.9 x 73.0 3.500 x 2.874	300 2.07	2 - M12 x 65	120 4.724	164 6.457	48 1.890	UL	FM
XGQT02B-80X65-2	80 x 65 3 x 2 1/2	88.9 x 76.1 3.500 x 2.996	300 2.07	2 - M12 x 65	120 4.724	164 6.457	48 1.890	UL	FM
XGQT02B-100X40	100 x 40 4 x 1 1/2	114.3 x 48.3 4.500 x 1.900	300 2.07	2 - M12 x 65	150 5.906	195 7.677	49 1.929	UL	FM
XGQT02B-100X50	100 x 50 4 x 2	114.3 x 60.3 4.500 x 2.375	300 2.07	2 - M12 x 65	150 5.906	195 7.677	49 1.929	UL	FM
XGQT02B-100X65-1	100 x 65 4 x 2 1/2	114.3 x 73.0 4.500 x 2.874	300 2.07	2 - M12 x 65	150 5.906	195 7.677	49 1.929	UL	FM
XGQT02B-100X65-2	100 x 65 4 x 2 1/2	114.3 x 76.1 4.500 x 2.996	300 2.07	2 - M12 x 65	150 5.906	195 7.677	49 1.929	UL	FM
XGQT02B-100X80	100 x 80 4 x 3	114.3 x 88.9 4.500 x 3.500	300 2.07	2 - M12 x 65	150 5.906	195 7.677	49 1.929	UL	FM
XGQT02B-150X100-1	150 x 100 6 x 4	165.1 x 114.3 6.500 x 4.500	300 2.07	2 - M12 x 75	203 7.992	235 9.252	50 1.969		
XGQT02B-150X80	150 x 80 6 x 3	168.3 x 88.9 6.625 x 3.500	300 2.07	2 - M12 x 75	203 7.992	235 9.252	50 1.969	UL	FM
XGQT02B-150X100-2	150 x 100 6 x 4	168.3 x 114.3 6.625 x 4.500	300 2.07	2 - M12 x 75	203 7.992	235 9.252	50 1.969	UL	FM
XGQT02B-200X150	200 x 150 8 x 6	219.1 x 168.3 8.625 x 6.625	300 2.07	2 - M16 x 110	264 10.394	313 12.323	60 2.362	UL	FM

Push Lock Coupling Model: 101T



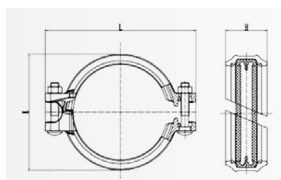
Technical Data

Part No.	Nominal Size mm/in	Pipe O.D. mm/in	Working Pressure PSI/MPa	Bolt Size No. - Size mm	Torque Value (N · M)	Dimensions L mm/ in			UL	FM
						A	L	H		
101T-25	25 1	33.7 1.32	450 3.1	M10 x 55	90 ± 10	57.3	98.6	47.6	UL	FM
101T-32	32 1 ¼	42.4 1.67	450 3.1	M10 x 60	90 ± 10	64	107.5	47.5	UL	FM
101T-40	40 1 ½	48.3 1.90	450 3.1	M10 x 60	90 ± 10	70	114	47.5	UL	FM
101T-50	50 2	60.3 2.37	365 2.5	M10 x 65	90 ± 10	84	128	48	UL	FM
101T-65-1	65 2 ½	73 2.87	365 2.5	M10 x 70	100 ± 10	96.4	140.3	48	UL	FM
101T-65-2	65 2 ½	76.1 3.00	365 2.5	M10 x 70	100 ± 10	99.5	143.5	48	UL	FM
101T-80	80 3	88.9 3.50	365 2.5	M12 x 80	100 ± 10	113.5	168	48	UL	FM
101T-100-1	100 4	108 4.25	365 2.5	M12 x 80	120 ± 10	133	187.5	50	UL	FM
101T-100-2	100 4	114.3 4.50	365 2.5	M12 x 80	120 ± 10	143	194	50	UL	FM
101T-125-1	125 5	133 5.24	365 2.5	M12 x 85	150 ± 10	165.5	221	50	UL	FM
101T-125-2	125 5	139.7 5.50	365 2.5	M12 x 85	150 ± 10	172	228	50	UL	FM
101T-125-3	125 5	141.3 5.56	365 2.5	M12 x 85	150 ± 10	173.7	229.5	50	UL	FM
101T-150-1	150 6	159 6.26	365 2.5	M12 x 90	150 ± 10	190	251	51	UL	FM
101T-150-2	150 6	165.1 6.5	365 2.5	M12 x 90	150 ± 10	198	256	51	UL	FM
101T-150-3	150 6	168.3 6.63	365 2.5	M12 x 90	150 ± 10	201	259	51	UL	FM

Required Assembly Torques

Product Size	Required Torque	
	Max N.m	Max Ft-Lbs
Inch		
1"	90	66
1-1/4"	90	66
1-1/2"	90	66
2"	90	66
2-1/2"	100	73
76.1	100	73
3"	120	88
108	140	103
4"	140	103
133	150	110
139.7	150	110
5"	150	110
159	150	110
165.1	150	110
6"	150	110

Quick-Mech Rigid Coupling Model: 91



Key Features

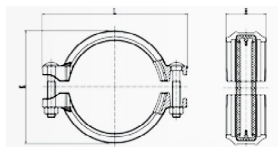
FIS MENA Model 91 is Ductile Iron Grooved Rigid Couplings. 91 is designed for use on schedule 10, schedule 30, schedule 40, GB/T3091, FF, MF, EF, HF, ISO 4200 D, ISO 4200 E, ISO 4200 F, ISO 4200 G, EN10217-1, EN 10220, and KS D 3507 pipe. Sizes of 91 from 25mm-300mm/1"-12". Pressure of 91 conforms to the list from UL.

The quick coupling is designed based on the special structure. We don't need to disassemble bolts & nuts, and gaskets during installation. The pipe can be directly inserted into the couplings, then we just fasten the bolts & nuts, which only takes 1/3 of the time with standard coupling installation. Meanwhile, we don't need to worry about the bolts & nuts missing possibility during installation of standard coupling. Galvanised option available upon request.

Specifications									
Model No	Nominal Size mm/in	Pipe O.D mm/in	Working Pressure PSI/MPa	Bolt Size	Dimensions L mm/in			UL	FM
					No.-Size mm	K	L		
91-25	25 1	33.7 1.327	300 2.07	2-M10 x 55 2-3/8 x 55	63 2.48	95 3.74	47 1.85	UL	
91-32	32 1¼	42.4 1.669	300 2.07	2-M10 x 55 2-3/8 x 55	72 2.83	104 4.09	47 1.85	UL	
91-40	40 1½	48.3 1.900	300 2.07	2-M10 x 55 2-3/8 x 55	77 3.03	111 4.37	47 1.85	UL	
91-50	50 2	60.3 2.375	300 2.07	2-M10 x 55 2-3/8 x 55	91 3.58	123 4.84	47 1.85	UL	
91-65-1	65 2½	73.0 2.875	300 2.07	2-M10 x 60 2-3/8 x 60	103 4.06	137 5.39	47 1.85	UL	
91-65-2	65 2½	76.1 3.000	300 2.07	2-M10 x 60 2-3/8 x 60	107 4.21	141 5.55	47 1.85	UL	
91-80	80 3	88.9 3.500	300 2.07	2-M10 x 60 2-3/8 x 60	119 4.69	155 6.10	48.5 1.91	UL	
91-100-1	100 4	108 4.250	300 2.07	2-M12 x 65 2-1/2 x 65	144 5.67	178 7.01	51.5 2.03	UL	
91-100-2	100 4	114.3 4.500	300 2.07	2-M12 x 65 2-1/2 x 65	149 5.87	185 7.28	51.5 2.03	UL	
91-125-1	125 5	139.7 5.500	300 2.07	2-M12 x 75 2-1/2 x 75	177 6.97	214 8.43	52 2.05	UL	
91-125-2	125 5	141.3 5.563	300 2.07	2-M12 x 75 2-1/2 x 75	178 7.01	215 8.46	52 2.05	UL	
91-150-1	150 6	159.0 6.250	300 2.07	2-M12 x 80 2-1/2 x 80	196 7.72	235 9.25	52.5 2.07	UL	
91-150-2	150 6	165.1 6.500	300 2.07	2-M12 x 80 2-1/2 x 80	201 7.91	240 9.45	52.5 2.07	UL	
91-150-3	150 6	168.3 6.625	300 2.07	2-M12 x 80 2-1/2 x 80	205 8.07	244 9.61	52.5 2.07	UL	
91-200-1	200 8	216.3 8.516	300 2.07	2-M16 x 100 2-5/8 x 100	259 10.20	313 12.32	64 2.52	UL	
91-200-2	200 8	219.1 8.625	300 2.07	2-M16 x 100 2-5/8 x 100	264 10.39	316 12.44	64 2.52	UL	
91-250-1	250 10	267.0 10.512	300 2.07	2-M22 x 155 2-7/8 x 155	328 12.91	388 15.28	68 2.68	UL	
91-250-2	250 10	273.0 10.748	300 2.07	2-M22 x 155 2-7/8 x 155	334 13.15	395 15.55	68 2.68	UL	
91-300-1	300 12	318.4 12.535	300 2.07	2-M22 x 155 2-7/8 x 155	381 15.00	444 17.48	68 2.68	UL	
91-300-2	300 12	323.9 12.752	300 2.07	2-M22 x 155 2-7/8 x 155	387 15.24	451 17.76	68 2.68	UL	

Required Assembly Torques					
Product Size	Required Torque		Product Size	Required Torque	
Inch	N.m	Ft-Lbs	Inch	N.m	Ft-Lbs
1"	35-50	26-37	4"	75-110	55-81
1-1/4"	35-50	26-37	5" (139.7)	80-110	59-81
1-1/2"	35-50	26-37	6" (165.1)	80-110	59-81
2"	35-50	26-37	8" (216.3)	120-165	89-122
2-1/2" (76.1)	35-50	26-37	10" (267.4)	300-390	221-288
3"	35-50	26-37	12" (318.5)	300-390	221-288

Quick-Mech Flexible Coupling Model: 92



Key Features

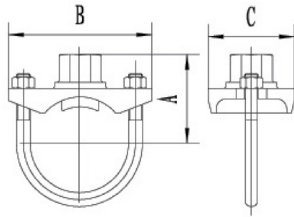
FIS MENA Model 92 is Ductile Iron Grooved Flexible Couplings. 92 is designed for use on schedule 10, schedule 30, schedule 40, GB/T3091, FF, MF, EF, HF, ISO 4200 D, ISO 4200 E, ISO 4200 F, ISO 4200 G, EN10217-1, EN 10220, and KS D 3507 pipe. Sizes of 92 from 25mm-300mm/1"-12". Pressure of 92 conforms to the list from UL.

The quick coupling is designed based on the special structure. We don't need to disassemble bolts & nuts, and gaskets during installation. The pipe can be directly inserted into the couplings, then we just fasten the bolts & nuts, which only takes 1/3 of the time with standard coupling installation. Meanwhile, we don't need to worry about the bolts & nuts missing possibility during installation of standard coupling. Galvanised option available upon request.

Specifications									
Model No	Nominal Size mm/in	Pipe O.D mm/in	Working Pressure PSI/MPa	Bolt Size	Dimensions L mm/in			UL	FM
					No.-Size mm	K	L		
92-25	25 1	33.7 1.327	300 2.07	2-M10 x 55 2-3/8 x 55	63 2.48	95 3.74	47 1.85	UL	
92-32	32 1¼	42.4 1.669	300 2.07	2-M10 x 55 2-3/8 x 55	72 2.83	104 4.09	47 1.85	UL	
92-40	40 1½	48.3 1.900	300 2.07	2-M10 x 55 2-3/8 x 55	77 3.03	111 4.37	47 1.85	UL	
92-50	50 2	60.3 2.375	300 2.07	2-M10 x 55 2-3/8 x 55	91 3.58	123 4.84	47 1.85	UL	
92-65-1	65 2½	73.0 2.875	300 2.07	2-M10 x 60 2-3/8 x 60	103 4.06	137 5.39	47 1.85	UL	
92-65-2	65 2½	76.1 3.000	300 2.07	2-M10 x 60 2-3/8 x 60	107 4.21	141 5.55	47 1.85	UL	
92-80	80 3	88.9 3.500	300 2.07	2-M10 x 60 2-3/8 x 60	119 4.69	155 6.10	48.5 1.91	UL	
92-100	100 4	114.3 4.500	300 2.07	2-M12 x 65 2-1/2 x 65	149 5.87	185 7.28	51.5 2.03	UL	
92-125-1	125 5	139.7 5.500	300 2.07	2-M12 x 75 2-1/2 x 75	177 6.97	214 8.43	52 2.05	UL	
92-125-2	125 5	141.3 5.563	300 2.07	2-M12 x 75 2-1/2 x 75	178 7.01	215 8.46	52 2.05	UL	
92-150-1	150 6	165.1 6.500	300 2.07	2-M12 x 80 2-1/2 x 80	201 7.91	240 9.45	52.5 2.07	UL	
92-150-2	150 6	168.3 6.625	300 2.07	2-M12 x 80 2-1/2 x 80	205 8.07	244 9.61	52.5 2.07	UL	
92-200	200 8	219.1 8.625	300 2.07	2-M16 x 100 2-5/8 x 100	264 10.39	316 12.44	64 2.52	UL	
92-250	250 10	273.0 10.748	300 2.07	2-M22 x 155 2-7/8 x 155	334 13.15	395 15.55	68 2.68	UL	
92-300	300 12	323.9 12.752	300 2.07	2-M22 x 155 2-7/8 x 155	387 15.24	451 17.76	68 2.68	UL	

U-Bolted Mechanical Tee Threaded

Model: XGQT03U



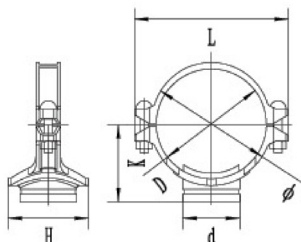
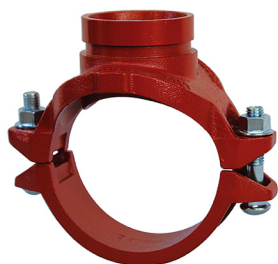
Product Description

FIS MENA Model XGQT03U is Ductile Iron U-Bolted Threaded Mechanical Tee. XGQT03U is designed for use on GB/T3091, SC40, SC10, EN4200F and EN4200E pipe. Sizes of XGQT03U from 25mm - 65mm / 1" - 2 1/2". Pressure of XGQT03U conform to the list from UL and FM. Galvanised option available upon request.

Technical Data

Part No.	Nominal Size mm/in	Pipe O.D. mm/in	Working Pressure PSI/MPa	U Bolt Size No. - Size mm	Dimensions L mm/in			Hole Cutting Dimensions	UL	FM
					A	B	C			
XGQT03U-25X15	25 x 15 1 x 1/2	33.7 x 21.3 1.327 x 0.839	300 2.07	M10 x 25	39 1.535	76 2.992	43 1.654	24 0.945	UL	FM
XGQT03U-25X20	25 x 20 1 x 3/4	33.7 x 26.9 1.327 x 1.059	300 2.07	M10 x 25	46 1.811	84 3.307	43 1.693	24 0.945	UL	FM
XGQT03U-25X25	25 x 25 1 x 1	33.7 x 33.7 1.327 x 1.327	300 2.07	M10 x 28.5	50 1.969	92 3.622	57 2.244	24 0.945		
XGQT03U-32X15	32 x 15 1 1/4 x 1/2	42.4 x 21.3 1.669 x 0.839	300 2.07	M10 x 28.5	43 1.693	90 3.543	56 2.205	30 1.181	UL	FM
XGQT03U-32X20	32 x 20 1 1/4 x 3/4	42.4 x 26.9 1.669 x 1.059	300 2.07	M10 x 28.5	45 1.772	90 3.543	56 2.205	30 1.181	UL	FM
XGQT03U-32X25-1	32 x 25 1 1/4 x 1	42.4 x 33.7 1.669 x 1.327	300 2.07	M10 x 28.5	50 1.969	90 3.543	56 2.205	30 1.181		FM
XGQT03U-32X25-2	32 x 25 1 1/4 x 1	42.4 x 33.7 1.669 x 1.327	300 2.07	M10 x 28.5	50 1.969	90 3.543	56 2.205	32 1.260	UL	FM
XGQT03U-40X15	40 x 15 1 1/2 x 1/2	48.3 x 21.3 1.900 x 0.839	300 2.07	M10 x 28.5	43 1.693	93 3.661	59 2.323	30 1.181	UL	FM
XGQT03U-40X20	40 x 20 1 1/2 x 3/4	48.3 x 26.9 1.900 x 1.059	300 2.07	M10 x 28.5	54 2.126	93 3.661	59 2.323	30 1.181	UL	FM
XGQT03U-40X25-1	40 x 25 1 1/2 x 1	48.3 x 33.7 1.900 x 1.327	300 2.07	M10 x 28.5	58 2.283	93 3.661	59 2.323	30 1.181		FM
XGQT03U-40X25-2	40 x 25 1 1/2 x 1	48.3 x 33.7 1.900 x 1.327	300 2.07	M10 x 28.5	58 2.283	93 3.661	59 2.323	32 1.260	UL	FM
XGQT03U-50X15	50 x 15 2 x 1/2	60.3 x 21.3 2.375 x 0.839	300 2.07	M10 x 30	54 2.126	96 3.780	59 2.323	30 1.181	UL	FM
XGQT03U-50X20	50 x 20 2 x 3/4	60.3 x 26.9 2.375 x 1.059	300 2.07	M10 x 30	56 2.205	96 3.780	59 2.323	30 1.181	UL	FM
XGQT03U-50X25-1	50 x 25 2 x 1	60.3 x 33.7 2.375 x 1.327	300 2.07	M10 x 30	66 2.598	96 3.780	59 2.323	30 1.181		FM
XGQT03U-50X25-2	50 x 25 2 x 1	60.3 x 33.7 2.375 x 1.327	300 2.07	M10 x 30	66 2.598	96 3.780	59 2.323	32 1.260	UL	FM
XGQT03U-65X15-1	65 x 15 2 1/2 x 1/2	73 x 21.3 2.874 x 0.839	300 2.07	M10 x 30	60 2.362	110 4.331	59 2.323	30 1.181	UL	FM
XGQT03U-65X20	65 x 20 2 1/2 x 3/4	73 x 26.9 2.874 x 1.059	300 2.07	M10 x 30	63 2.480	110 4.331	59 2.323	30 1.181	UL	FM
XGQT03U-65X25-1	65 x 25 2 1/2 x 1	73 x 33.7 2.874 x 1.327	300 2.07	M10 x 30	70 2.756	110 4.331	59 2.323	30 1.181		FM
XGQT03U-65X25-2	65 x 25 2 1/2 x 1	73 x 33.7 2.874 x 1.327	300 2.07	M10 x 30	70 2.756	110 4.331	59 2.323	32 1.260	UL	FM
XGQT03U-65X32-1	65 x 32 2 1/2 x 1 1/4	73 x 42.4 2.874 x 1.669	300 2.07	M10 x 30	64 2.520	113.5 4.469	74.2 2.921	51 2.007	UL	
XGQT03U-65X15-2	65 x 15 2 1/2 x 1/2	76.1 x 21.3 2.996 x 0.839	300 2.07	M10 x 30	61 2.402	110 4.331	59 2.323	30 1.181	UL	FM
XGQT03U-65X20-2	65 x 20 2 1/2 x 3/4	76.1 x 26.9 2.996 x 1.059	300 2.07	M10 x 30	67 2.638	110 4.331	59 2.323	30 1.181	UL	FM
XGQT03U-65X25-3	65 x 25 2 1/2 x 1	76.1 x 33.7 2.996 x 1.327	300 2.07	M10 x 30	74 2.913	110 4.331	59 2.323	30 1.181		FM
XGQT03U-65X25-4	65 x 25 2 1/2 x 1	76.1 x 33.7 2.996 x 1.327	300 2.07	M10 x 30	74 2.913	110 4.331	59 2.323	32 1.260	UL	FM
XGQT03U-65X32-2	65 x 32 2 1/2 x 1 1/4	76 x 42.4 2.996 x 1.669	300 2.07	M10 x 30	65 2.559	113.5 4.469	74.2 2.921	51 2.007	UL	
XGQT03U-80X15	80 x 15 3 x 1/2	88.9 x 21.3 3.5 x 0.839	300 2.07	M12 x 30	68 2.677	131.5 5.177	67.5 2.657	38 1.496	UL	
XGQT03U-80X20	80 x 20 3 x 3/4	88.9 x 26.9 3.5 x 1.059	300 2.07	M12 x 30	69 2.717	131.5 5.177	67.5 2.657	38 1.496	UL	
XGQT03U-80X25	80 x 25 3 x 1	88.9 x 33.7 3.5 x 1.327	300 2.07	M12 x 30	73.5 2.894	131.5 5.177	67.5 2.657	38 1.496	UL	
XGQT03U-80X32	80 x 32 3 x 1 1/4	88.9 x 42.4 2.878 x 1.669	300 2.07	M12 x 30	70 2.756	132 5.197	78 3.071	51 2.007	UL	
XGQT03U-100X15	100 x 15 4 x 1/2	114.3 x 21.3 4.5 x 0.839	300 2.07	M12 x 40	79.5 3.130	154 6.063	70 2.756	38 1.496	UL	
XGQT03U-100X20	100 x 20 4 x 3/4	114.3 x 26.9 4.5 x 1.059	300 2.07	M12 x 40	80.5 3.169	154 6.063	70 2.756	38 1.496	UL	
XGQT03U-100X25	100 x 25 4 x 1	114.3 x 33.7 4.5 x 1.327	300 2.07	M12 x 40	86.5 3.406	154 6.063	70 2.756	38 1.496	UL	
XGQT03U-100X32	100 x 32 4 x 1 1/4	114.3 x 42.4 4.5 x 1.669	300 2.07	M12 x 40	82.5 3.248	154 6.063	78 3.071	51 2.007	UL	

Mechanical Tee Grooved Model: XGQT03

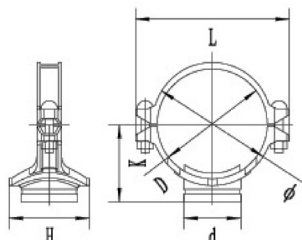


Product Description

FIS MENA Model XGQT03 is Ductile Iron Grooved Mechanical Tee. XGQT03 is designed for use on schedule 10, schedule 40 and GB/T3091 pipe. Sizes of XGQT03 from 50mm - 250mm / 2" - 10". Pressure of XGQT03 conform to the list from UL and FM. Galvanised option available upon request.

Part No.	Nominal Size mm/in	Pipe O.D. mm/in	Working Pressure PSI/MPa	U Bolt Size No. - Size mm	Dimensions L mm/in				Hole Cutting Dimensions mm/in	UL	FM
					Ø	L	K	H			
XGQT03-50X25	50 x 25 2 x 1	60.3 x 33.7 2.375 x 1.327	300 2.07	2 - M10 x 55	75 2.953	116 4.567	64 2.520	72 2.835	38 1.496	UL	FM
XGQT03-50X32	50 x 32 2 x 1 ¼	60.3 x 42.4 2.375 x 1.669	300 2.07	2 - M10 x 55	75 2.953	116 4.566	65 2.559	72 2.835	46 1.811	UL	FM
XGQT03-50X40	50 x 40 2 x 1 ½	60.3 x 48.3 2.375 x 1.900	300 2.07	2 - M10 x 55	75 2.953	116 4.566	65 2.559	72 2.835	46 1.811	UL	FM
XGQT03-65X25-1	65 x 25 2 ½ x 1	73 x 33.7 2.874 x 1.327	300 2.07	2 - M12 x 60	93 3.661	136 5.354	80 3.150	77 3.031	38 1.496	UL	FM
XGQT03-65X32-1	65 x 32 2 ½ x 1 ¼	73 x 42.4 2.874 x 1.669	300 2.07	2 - M12 x 60	93 3.661	136 5.354	80 3.150	83 3.268	46 1.811		
XGQT03-65X40-1	65 x 40 2 ½ x 1 ½	73 x 48.3 2.874 x 1.900	300 2.07	2 - M12 x 60	93 3.661	136 5.354	80 3.150	83 3.268	51 2.007		
XGQT03-65X25-2	65 x 25 2 ½ x 1	76.1 x 33.7 2.996 x 1.327	300 2.07	2 - M12 x 60	102 4.016	144 5.669	78 3.071	77 3.031	38 1.496	UL	FM
XGQT03-65X32-2	65 x 32 2 ½ x 1 ¼	76.1 x 42.4 2.996 x 1.669	300 2.07	2 - M12 x 60	102 4.016	144 5.669	78 3.071	83 3.267	46 1.811	UL	FM
XGQT03-65X40-2	65 x 40 2 ½ x 1 ½	76.1 x 48.3 2.996 x 1.900	300 2.07	2 - M12 x 60	102 4.016	144 5.669	78 3.071	83 3.267	51 2.007	UL	FM
XGQT03-80X25	80 x 25 3 x 1	88.9 x 33.7 3.500 x 1.327	300 2.07	2 - M12 x 65	114 4.488	152 5.984	83 3.268	77 3.031	38 1.496	UL	FM
XGQT03-80X32	80 x 32 3 x 1 ¼	88.9 x 42.4 3.500 x 1.669	300 2.07	2 - M12 x 65	114 4.488	152 5.984	85 3.346	83 3.268	46 1.811	UL	FM
XGQT03-80X40	80 x 40 3 x 1 ½	88.9 x 48.3 3.500 x 1.900	300 2.07	2 - M12 x 65	114 4.488	152 5.984	85 3.346	93 3.661	51 2.007	UL	FM
XGQT03-80X50	80 x 50 3 x 2	88.9 x 60.3 3.500 x 2.375	300 2.07	2 - M12 x 65	114 4.488	152 5.984	85 3.346	99 3.898	61 2.402	UL	FM
XGQT03-80X65-1	80 x 65 3 x 2 ½	88.9 x 73 3.500 x 2.874	300 2.07	2 - M12 x 65	114 4.488	152 5.984	85 3.346	99 3.898	81 3.189		
XGQT03-80X65-2	80 x 65 3 x 2 ½	88.9 x 76 3.500 x 2.996	300 2.07	2 - M12 x 65	114 4.488	152 5.984	85 3.346	99 3.898	81 3.189		
XGQT03-100X25	100 x 25 4 x 1	114.3 x 33.7 4.500 x 1.327	300 2.07	2 - M12 x 65	140 5.512	180 7.087	97 3.819	77 3.031	38 1.496	UL	FM
XGQT03-100X32	100 x 32 4 x 1 ¼	114.3 x 42.4 4.500 x 1.669	300 2.07	2 - M12 x 65	140 5.512	180 7.087	97 3.819	83 3.268	46 1.811	UL	FM
XGQT03-100X40	100 x 40 4 x 1 ½	114.3 x 48.3 4.500 x 1.900	300 2.07	2 - M12 x 65	140 5.512	180 7.087	98 3.858	92 3.622	51 2.007	UL	FM
XGQT03-100X50	100 x 50 4 x 2	114.3 x 60.3 4.500 x 2.375	300 2.07	2 - M12 x 65	140 5.512	180 7.087	99 3.898	98 3.858	61 2.402	UL	FM
XGQT03-100X65-1	100 x 65 4 x 2 ½	114.3 x 73 4.500 x 2.874	300 2.07	2 - M12 x 65	140 5.512	180 7.087	99 3.898	122 4.803	81 3.189	UL	FM
XGQT03-100X65-2	100 x 65 4 x 2 ½	114.3 x 76.1 4.500 x 2.996	300 2.07	2 - M12 x 65	140 5.512	180 7.087	99 3.898	122 4.803	81 3.189	UL	FM
XGQT03-100X80	100 x 80 4 x 3	114.3 x 88.9 4.500 x 3.500	300 2.07	2 - M12 x 65	140 5.512	180 7.087	98 3.858	123 4.843	86 3.386	UL	FM
XGQT03-125X50	125 x 50 5 x 2	139.7 x 60.3 5.500 x 2.375	300 2.07	2 - M16 x 75	168 6.614	220 8.661	112 4.409	99 3.819	61 2.402	UL	FM
XGQT03-125X65	125 x 65 5 x 2 ½	139.7 x 76.1 5.500 x 2.996	300 2.07	2 - M16 x 75	168 6.614	220 8.661	112 4.409	122 4.409	81 3.189	UL	FM

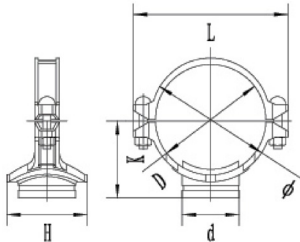
Mechanical Tee Grooved Model: XGQT03



Technical Data

Part No.	Nominal Size mm/in	Pipe O.D. mm/in	Working Pressure PSI/MPa	U Bolt Size No. - Size mm	Dimensions L mm/in				Hole Cutting Dimensions mm/in	UL	FM
					Ø	L	K	H			
XGQT03-125X80	125 x 80 5 x 3	139.7 x 88.9 5.500 x 3.500	300 2.07	2 - M16 x 75	168 6.614	220 8.661	113 4.449	136 5.354	86 3.386	UL	FM
XGQT03-150X65-1	150 x 65 6 x 2 1/2	159.0 x 76.1 6.260 x 2.996	300 2.07	2 - M16 x 85	187 7.362	237 9.331	121 4.764	122 4.409	81 3.189		
XGQT03-150X80-1	150 x 80 6 x 3	159.0 x 88.9 6.260 x 3.500	300 2.07	2 - M16 x 85	187 7.362	237 9.331	121 4.764	136 5.354	86 3.386		
XGQT03-150X100-1	150 x 100 6 x 4	159.0 x 108.0 6.260 x 4.252	300 2.07	2 - M16 x 85	187 7.362	237 9.331	125 4.921	158 6.220	114 4.488		
XGQT03-150X100-2	150 x 100 6 x 4	159.0 x 114.3 6.260 x 4.500	300 2.07	2 - M16 x 85	187 7.362	237 9.331	125 4.921	158 6.220	114 4.488		
XGQT03-150X50-1	150 x 50 6 x 2	165.1 x 60.3 6.500 x 2.375	300 2.07	2 - M16 x 85	194 7.638	247 9.724	123 4.842	99 3.898	61 2.402	UL	FM
XGQT03-150X65-2	150 x 65 6 x 2 1/2	165.1 x 76.1 6.500 x 2.996	300 2.07	2 - M16 x 85	194 7.638	247 9.724	123 4.842	123 4.843	81 3.189	UL	FM
XGQT03-150X80-2	150 x 80 6 x 3	165.1 x 88.9 6.500 x 3.500	300 2.07	2 - M16 x 85	194 7.638	247 9.724	125 4.921	136 5.354	86 3.386	UL	FM
XGQT03-150X100-3	150 x 100 6 x 4	165.1 x 114.3 6.500 x 4.500	300 2.07	2 - M16 x 85	194 7.638	247 9.724	125 4.921	158 6.220	114 4.488	UL	FM
XGQT03-150X25	150 x 25 6 x 1	168.3 x 33.7 6.625 x 1.327	300 2.07	2 - M16 x 85	198 7.795	248 9.764	125 4.921	79 3.110	38 1.496	UL	FM
XGQT03-150X32	150 x 32 6 x 1 1/4	168.3 x 42.4 6.625 x 1.669	300 2.07	2 - M16 x 85	198 7.795	248 9.764	125 4.921	84 3.307	46 1.811	UL	FM
XGQT03-150X40	150 x 40 6 x 1 1/2	168.3 x 48.3 6.625 x 1.900	300 2.07	2 - M16 x 85	198 7.795	248 9.764	125 4.921	94 3.701	51 2.007	UL	FM
XGQT03-150X50-2	150 x 50 6 x 2	168.3 x 60.3 6.625 x 2.375	300 2.07	2 - M16 x 85	198 7.795	248 9.764	125 4.921	99 3.898	61 2.401	UL	FM
XGQT03-150X65-3	150 x 65 6 x 2 1/2	168.3 x 73 6.625 x 2.874	300 2.07	2 - M16 x 85	198 7.795	248 9.764	128 5.039	122 4.409	81 3.189		
XGQT03-150X65-4	150 x 65 6 x 2 1/2	168.3 x 76.1 6.625 x 2.996	300 2.07	2 - M16 x 85	198 7.795	248 9.764	128 5.039	122 4.409	81 3.189	UL	FM
XGQT03-150X80-3	150 x 80 6 x 3	168.3 x 88.9 6.625 x 3.500	300 2.07	2 - M16 x 85	198 7.795	248 9.764	130 5.118	136 5.354	86 3.385	UL	FM
XGQT03-150X100-4	150 x 100 6 x 4	168.3 x 114.3 6.625 x 4.500	300 2.07	2 - M16 x 85	198 7.795	248 9.764	128 5.039	157 6.181	114 4.488		
XGQT03-200X65-1	200 x 65 8 x 2 1/2	216 x 76.1 8.504 x 2.996	300 2.07	2 - M16 x 100	247 9.724	302 11.890	150 5.906	127 5.000	81 3.189		
XGQT03-200X50-1	200 x 50 8 x 2	219.1 x 60.3 8.625 x 2.375	300 2.07	2 - M16 x 100	250 9.843	302 11.890	152 5.984	99 3.898	61 2.402	UL	FM
XGQT03-200X65-2	200 x 65 8 x 2 1/2	219.1 x 73 8.625 x 2.874	300 2.07	2 - M16 x 100	250 9.843	302 11.890	152 5.984	130 5.118	81 3.189		
XGQT03-200X65-3	200 x 65 8 x 2 1/2	219.1 x 76.1 8.625 x 2.996	300 2.07	2 - M16 x 100	250 9.843	302 11.890	152 5.984	130 5.118	81 3.189	UL	FM
XGQT03-200X80	200 x 80 8 x 3	219.1 x 88.9 8.625 x 3.500	300 2.07	2 - M16 x 100	250 9.843	302 11.890	152 5.984	137 5.394	86 3.386	UL	FM
XGQT03-200X100	200 x 100 8 x 4	219.1 x 114.3 8.625 x 4.500	300 2.07	2 - M16 x 100	250 9.843	304 11.969	153 6.024	162 6.378	114 4.488	UL	FM
XGQT03-200X150	200 x 150 8 x 6	219.1 x 168.3 8.625 x 6.625	300 2.07	2 - M16 x 100	250 9.843	304 11.969	158 6.850	210 8.425	160 6.299		
XGQT03-200X65-4	250 x 65 10 x 2 1/2	273.0 x 73 10.748 x 2.874	300 2.07	2 - M22 x 130	307 12.087	376 14.803	186 7.323	131 5.157	81 3.189		
XGQT03-250X100	250 x 100 10 x 4	273.0 x 114.3 10.748 x 4.500	300 2.07	2 - M22 x 130	307 12.087	376 14.803	186 7.323	161 6.339	114 4.488		

V-Mechanical Tee Grooved Model: XGQT33



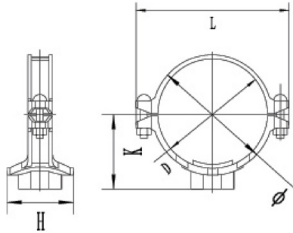
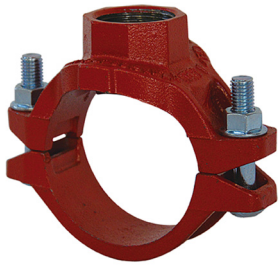
Product Description

FIS MENA Model XGQT33 is Ductile Iron Grooved Mechanical Tee. XGQT33 is designed for use on schedule 10 and schedule 40 pipe. Sizes of XGQT33 from 50mm - 200mm / 2" - 8". Pressure of XGQT33 conform to the list from UL and FM. Galvanised option available upon request.

Technical Data

Part No.	Nominal Size mm/in	Pipe O.D. mm/in	Working Pressure PSI/MPa	Bolt Size No. - Size mm	Dimensions L mm/in				Hole Cutting Dimensions mm/in	UL	FM
					Ø	L	K	H			
XGQT33-50X25	50 x 25 2 x 1	60.3 x 33.7 2.375 x 1.327	300 2.07	2 - M10 x 55	75 2.953	116 4.567	64 2.520	72 2.835	38 1.496		
XGQT33-50X32	50 x 32 2 x 1 1/4	60.3 x 42.4 2.375 x 1.669	300 2.07	2 - M10 x 55	75 2.953	116 4.567	65 2.559	72 2.835	45 1.772	UL	FM
XGQT33-50X40	50 x 40 2 x 1 1/2	60.3 x 48.3 2.375 x 1.900	300 2.07	2 - M10 x 55	75 2.953	116 4.567	65 2.559	72 2.835	45 1.772	UL	FM
XGQT33-65X32	65 x 32 2 1/2 x 1 1/4	73 x 42.4 2.87 x 1.669	300 2.07	2 - M12 x 60	93 3.661	136 5.354	75 2.295	84 3.307	46 1.811	UL	FM
XGQT33-65X40-1	65 x 40 2 1/2 x 1 1/2	73 x 48.3 2.87 x 1.900	300 2.07	2 - M12 x 60	93 3.661	136 5.354	75 2.292	84 3.307	51 2.007	UL	FM
XGQT33-65X25	65 x 25 2 1/2 x 1	76.1 x 33.7 2.996 x 1.327	300 2.07	2 - M12 x 65	102 4.016	144 5.669	78 3.071	77 3.031	38 1.496		
XGQT33-65X40X2	65 x 40 2 1/2 x 1 1/2	76.1 x 48.3 2.996 x 1.900	300 2.07	2 - M12 x 65	102 4.016	144 5.669	78 3.071	83 3.268	51 2.008		
XGQT33-80X25	80 x 25 3 x 1	88.9 x 33.7 3.500 x 1.327	300 2.07	2 - M12 x 65	114 4.488	152 5.984	83 3.268	77 3.031	38 1.496		
XGQT33-80X32	80 x 32 3 x 1 1/4	88.9 x 42.4 3.500 x 1.669	300 2.07	2 - M12 x 65	114 4.488	152 5.984	83 3.267	84 3.307	51 2.007	UL	FM
XGQT33-80X40	80 x 40 3 x 1 1/2	88.9 x 48.3 3.500 x 1.900	300 2.07	2 - M12 x 65	114 4.488	152 5.984	83 3.267	84 3.307	51 2.007	UL	FM
XGQT33-80X50	80 x 50 3 x 2	88.9 x 60.3 3.500 x 2.375	300 2.07	2 - M12 x 65	114 4.488	152 5.984	83 3.267	102 4.015	51 2.007	UL	FM
XGQT33-100X32	100 x 32 4 x 1 1/4	114.3 x 42.4 4.500 x 1.669	300 2.07	2 - M12 x 65	140 5.512	180 7.086	98 3.858	84 3.307	51 2.007	UL	FM
XGQT33-100X40	100 x 40 4 x 1 1/2	114.3 x 48.3 4.500 x 1.900	300 2.07	2 - M12 x 65	140 5.512	180 7.086	98 3.858	84 3.307	51 2.007	UL	FM
XGQT33-100X50	100 x 50 4 x 2	114.3 x 60.3 4.500 x 2.375	300 2.07	2 - M12 x 65	140 5.512	180 7.086	98 3.858	103 4.055	64 2.519	UL	FM
XGQT33-100X65-1	100 x 65 4 x 2 1/2	114.3 x 73 4.500 x 2.875	300 2.07	2 - M12 x 65	140 5.512	180 7.086	98 3.858	103 4.055	70 2.756	UL	FM
XGQT33-100X65-2	100 x 65 4 x 2 1/2	114.3 x 76.1 4.500 x 2.996	300 2.07	2 - M12 x 65	140 5.512	180 7.087	99 3.898	122 4.803	81 3.189		
XGQT33-125X40	125 x 40 5 x 1 1/2	141.3 x 48.3 5.563 x 1.900	300 2.07	2 - M16 x 75	168 6.614	220 8.661	104 4.094	95 3.740	51 2.007	UL	FM
XGQT33-125X50	125 x 50 5 x 2	141.3 x 60.3 5.563 x 2.375	300 2.07	2 - M16 x 75	168 6.614	220 8.661	112 4.409	100 3.937	64 2.519	UL	FM
XGQT33-150X50-1	150 x 50 6 x 2	165.1 x 60.3 6.500 x 2.375	300 2.07	2 - M16 x 85	190 7.480	247 9.724	123 4.843	109 4.291	64 2.520		
XGQT33-150X65-1	150 x 65 6 x 2 1/2	165.1 x 76.1 6.500 x 2.996	300 2.07	2 - M16 x 85	190 7.480	247 9.724	125 4.921	109 4.291	70 2.756		
XGQT33-150X80	150 x 80 6 x 3	165.1 x 88.9 6.500 x 3.500	300 2.07	2 - M16 x 85	190 7.480	247 9.724	125 4.921	135 5.315	89 3.504		
XGQT33-150X40	150 x 40 6 x 1 1/2	168.3 x 48.3 6.625 x 1.900	300 2.07	2 - M16 x 85	198 7.795	247 9.724	120 4.724	92 6.622	51 2.007	UL	FM
XGQT33-150X50-2	150 x 50 6 x 2	168.3 x 60.3 6.625 x 2.375	300 2.07	2 - M16 x 85	198 7.795	250 9.842	125 4.921	108 4.251	64 2.519	UL	FM
XGQT33-150X65-2	150 x 65 6 x 2 1/2	168.3 x 73 6.625 x 2.875	300 2.07	2 - M16 x 85	198 7.795	250 9.842	125 4.921	108 4.251	70 2.756	UL	FM
XGQT33-250X65	250 x 65 8 x 2 1/2	219.1 x 73 8.625 x 2.875	300 2.07	2 - M16 x 100	250 9.843	310 12.204	152 5.984	116 4.566	70 2.756	UL	FM
XGQT33-250X100	250 x 100 8 x 4	219.1 x 114.3 8.625 x 4.500	300 2.07	2 - M16 x 100	250 9.843	304 11.969	153 6.024	162 6.378	114 4.488		

**Mechanical Tee
Threaded
Model: XGQT03S**

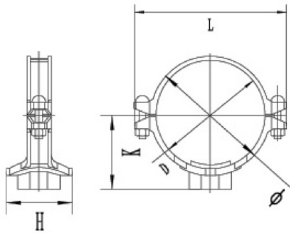
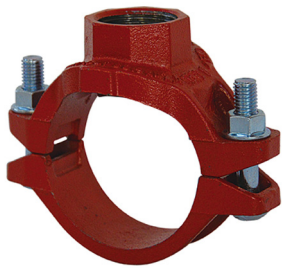


Product Description

FIS MENA Model XGQT03S is Ductile Iron Threaded Mechanical Tee. XGQT03S is designed for use on schedule 10, schedule 40 and GB/T3091 pipe. Sizes of XGQT03S from 40mm - 250mm / 1-1 / 2"-10". Pressure of XGQT03S conform to the list from UL and FM. Galvanised option available upon request.

Part No.	Nominal Size mm/in	Pipe O.D. mm/in	Working Pressure PSI/MPa	U Bolt Size No. - Size mm	Dimensions L mm/in				Hole Cutting Dimensions mm/in	UL	FM
					Ø	L	K	H			
XGQT03S-40X25	40 x 25 1 1/2 x 1	48.3 x 33.7 1.900 x 1.327	300 2.07	2 - M10 x 45	67 2.637	112 4.409	56 2.204	61 2.401	32 1.259	UL	
XGQT03S-50X15	50 x 15 2 x 1/2	60.3 x 21.3 2.375 x 0.839	300 2.07	2 - M10 x 55	75 2.953	116 4.567	56 2.205	72 2.835	38 1.496		
XGQT03S-50X20	50 x 20 2 x 3/4	60.3 x 26.9 2.375 x 1.059	300 2.07	2 - M10 x 55	75 2.953	116 4.567	56 2.205	72 2.835	38 1.496		
XGQT03S-50X25	50 x 25 2 x 1	60.3 x 33.7 2.375 x 1.327	300 2.07	2 - M10 x 55	75 2.953	116 4.567	57 2.244	72 2.835	38 1.496	UL	FM
XGQT03S-50X32	50 x 32 2 x 1 1/4	60.3 x 42.4 2.375 x 1.669	300 2.07	2 - M10 x 55	75 2.953	116 4.567	57 2.244	72 2.835	46 1.811	UL	FM
XGQT03S-50X40	50 x 40 2 x 1 1/2	60.3 x 48.3 2.375 x 1.900	300 2.07	2 - M10 x 55	75 2.953	116 4.567	61 2.402	72 2.835	46 1.811	UL	FM
XGQT03S-65X25-1	65 x 25 2 1/2 x 1	73 x 33.7 2.874 x 1.327	300 2.07	2 - M12 x 60	93 3.661	136 5.354	61 2.402	77 3.031	38 1.496		
XGQT03S-65X32-1	65 x 32 2 1/2 x 1 1/4	73 x 42.4 2.874 x 1.669	300 2.07	2 - M12 x 60	93 3.661	136 5.354	61 2.402	83 3.268	46 1.811	UL	FM
XGQT03S-65X40-1	65 x 40 2 1/2 x 1 1/2	73 x 48.3 2.874 x 1.900	300 2.07	2 - M12 x 60	93 3.661	136 5.354	61 2.402	83 3.268	51 2.008		
XGQT03S-65X50	65 x 50 2 1/2 x 2	73 x 60.3 2.874 x 2.375	300 2.07	2 - M12 x 60	93 3.661	136 5.354	78 3.071	85 3.346	51 2.008		
XGQT03S-65X15	65 x 15 2 1/2 x 1/2	76.1 x 21.3 2.996 x 0.839	300 2.07	2 - M12 x 60	93 3.661	136 5.354	65 2.559	78 3.071	38 1.496		
XGQT03S-65X20	65 x 20 2 1/2 x 3/4	76.1 x 26.9 2.996 x 1.059	300 2.07	2 - M12 x 60	93 3.661	136 5.354	65 2.559	78 3.071	38 1.496		
XGQT03S-65X25-2	65 x 25 2 1/2 x 1	76.1 x 33.7 2.996 x 1.327	300 2.07	2 - M12 x 60	102 4.016	144 5.669	67 2.756	77 3.031	38 1.496	UL	FM
XGQT03S-65X32-2	65 x 32 2 1/2 x 1 1/4	76.1 x 42.4 2.996 x 1.669	300 2.07	2 - M12 x 60	102 4.016	144 5.669	67 2.756	83 3.268	46 1.811	UL	FM
XGQT03S-65X40-2	65 x 40 2 1/2 x 1 1/2	76.1 x 48.3 2.996 x 1.900	300 2.07	2 - M12 x 60	102 4.016	144 5.669	67 2.756	83 3.268	51 2.008	UL	FM
XGQT03S-65X40-3	65 x 40 2 1/2 x 2	76.1 x 60.3 2.996 x 2.375	300 2.07	2 - M12 x 60	102 4.016	144 5.669	72 2.913	83 3.268	51 2.008	UL	
XGQT03S-80X15	80 x 15 3 x 1/2	88.9 x 21.3 3.500 x 0.839	300 2.07	2 - M12 x 65	114 4.488	152 5.984	73 2.874	77 3.031	38 1.496		
XGQT03S-80X20	80 x 20 3 x 3/4	88.9 x 26.9 3.500 x 1.059	300 2.07	2 - M12 x 65	114 4.488	152 5.984	73 2.874	77 3.031	38 1.496		
XGQT03S-80X25	80 x 25 3 x 1	88.9 x 33.7 3.500 x 1.327	300 2.07	2 - M12 x 65	114 4.488	152 5.984	74 3.228	77 3.031	38 1.496	UL	FM
XGQT03S-80X32	80 x 32 3 x 1 1/4	88.9 x 42.4 3.500 x 1.669	300 2.07	2 - M12 x 65	114 4.488	152 5.984	73 2.874	83 3.268	46 1.811	UL	FM
XGQT03S-80X40	80 x 40 3 x 1 1/2	88.9 x 48.3 3.500 x 1.900	300 2.07	2 - M12 x 65	114 4.488	152 5.984	73 2.874	92 3.622	51 2.008	UL	FM
XGQT03S-80X50	80 x 50 3 x 2	88.9 x 60.3 3.500 x 2.375	300 2.07	2 - M12 x 65	114 4.488	152 5.984	78 3.071	99 3.898	61 2.402	UL	FM
XGQT03S-100X25-1	100 x 25 4 x 1	108.0 x 33.7 4.252 x 1.327	300 2.07	2 - M12 x 65	135 5.315	172 6.772	87 3.425	77 3.031	38 1.496		
XGQT03S-100X32-1	100 x 32 4 x 1 1/4	108.0 x 42.4 4.252 x 1.669	300 2.07	2 - M12 x 65	135 5.315	172 6.772	87 3.425	83 3.268	46 1.811		
XGQT03S-100X40-1	100 x 40 4 x 1 1/2	108.0 x 48.3 4.252 x 1.900	300 2.07	2 - M12 x 65	135 5.315	172 6.772	87 3.425	92 3.622	51 2.008		
XGQT03S-100X50-1	100 x 50 4 x 2	108.0 x 60.3 4.252 x 2.375	300 2.07	2 - M12 x 65	135 5.315	172 6.772	87 3.425	97 3.819	61 2.402		
XGQT03S-100X65-1	100 x 65 4 x 2 1/2	108.0 x 76.1 4.252 x 2.996	300 2.07	2 - M12 x 65	135 5.315	172 6.772	98 3.858	112 4.409	70 2.756		
XGQT03S-100X25-2	100 x 25 4 x 1/2	114.3 x 21.3 4.500 x 0.839	300 2.07	2 - M12 x 65	140 5.512	180 7.087	88 3.465	77 3.031	38 1.496		
XGQT03S-100X25-3	100 x 25 4 x 3/4	114.3 x 26.9 4.500 x 1.059	300 2.07	2 - M12 x 65	140 5.512	180 7.087	88 3.465	77 3.031	38 1.496		
XGQT03S-100X25-4	100 x 25 4 x 1	114.3 x 33.7 4.500 x 1.327	300 2.07	2 - M12 x 65	140 5.512	180 7.087	93 3.661	77 3.031	38 1.496	UL	FM
XGQT03S-100X32-2	100 x 32 4 x 1 1/4	114.3 x 42.4 4.500 x 1.669	300 2.07	2 - M12 x 65	140 5.512	180 7.087	93 3.661	83 3.268	46 1.811	UL	FM
XGQT03S-100X40-2	100 x 40 4 x 1 1/2	114.3 x 48.3 4.500 x 1.900	300 2.07	2 - M12 x 65	140 5.512	180 7.087	93 3.661	92 3.622	51 2.008	UL	FM
XGQT03S-100X50-2	100 x 50 4 x 2	114.3 x 60.3 4.500 x 2.375	300 2.07	2 - M12 x 65	140 5.512	180 7.087	93 3.661	97 3.819	61 2.402	UL	FM
XGQT03S-100X65-2	100 x 65 4 x 2 1/2	114.3 x 73 4.500 x 2.874	300 2.07	2 - M12 x 65	140 5.512	180 7.087	95 3.740	122 4.803	81 3.189	UL	FM
XGQT03S-100X65-3	100 x 65 4 x 2 1/2	114.3 x 76.1 4.500 x 2.996	300 2.07	2 - M12 x 65	140 5.512	180 7.087	97 3.819	122 4.803	81 3.189	UL	FM
XGQT03S-100X80	100 x 80 4 x 3	114.3 x 88.9 4.500 x 3.500	300 2.07	2 - M12 x 65	140 5.512	180 7.087	97 3.819	125 4.921	86 3.386	UL	FM
XGQT03S-125X25	125 x 25 5 x 1	133.0 x 33.7 5.236 x 1.327	300 2.07	2 - M16 x 75	160 6.299	204 8.031	100 3.937	77 3.031	38 1.496		
XGQT03S-125X32	125 x 32 5 x 1 1/4	133.0 x 42.4 5.236 x 1.669	300 2.07	2 - M16 x 75	160 6.299	204 8.031	100 3.937	83 3.268	46 1.811		
XGQT03S-125X40	125 x 40 5 x 1 1/2	133.0 x 48.3 5.236 x 1.900	300 2.07	2 - M16 x 75	160 6.299	204 8.031	100 3.937	92 3.622	51 2.008		

V-Mechanical Tee Threaded
Model: XGQT33S



Product Description

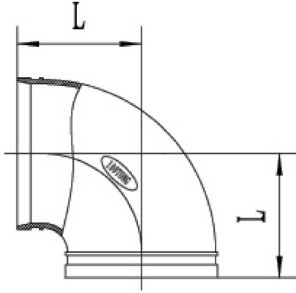
FIS MENA Model XGQT33S is Ductile Iron Threaded Mechanical Tee. XGQT33S is designed for use on schedule 10 and schedule 40 pipe. Sizes of XGQT33S from 25mm - 150mm / 1" - 6". Pressure of XGOT33S conform to the list from UL and FM. Galvanised option available upon request.

Part No.	Nominal Size mm/in	Pipe O.D. mm/in	Working Pressure PSI/MPa	Bolt Size No. - Size mm	Dimensions L mm/in				Hole Cutting Dimensions mm/in	UL	FM
					Ø	L	K	H			
XGQT33S-25X15	25 x 15 1 x 1/2	60.3 x 21.3 2.375 x 0.839	300 2.07	2 - M10 x 55	75 2.953	116 4.567	57 2.244	69 2.717	38 1.496	UL	FM
XGQT33S-25X20	25 x 20 1 x 3/4	60.3 x 26.9 2.375 x 1.059	300 2.07	2 - M10 x 55	75 2.953	116 4.567	57 2.244	69 2.717	38 1.496	UL	FM
XGQT33S-50X25	50 x 25 2 x 1	60.3 x 33.7 2.375 x 1.327	300 2.07	2 - M10 x 55	75 2.953	116 4.567	57 2.244	69 2.717	38 1.496	UL	FM
XGQT33S-50X32	50 x 32 2 x 1 1/4	60.3 x 42.4 2.375 x 1.669	300 2.07	2 - M10 x 55	75 2.953	116 4.567	57 2.244	72 2.835	45 1.772	UL	FM
XGQT33S-50X40	50 x 40 2 x 1 1/2	60.3 x 48.3 2.375 x 1.900	300 2.07	2 - M10 x 55	75 2.953	116 4.567	62 2.441	72 2.835	45 1.772	UL	FM
XGQT33S-65X15-1	65 x 15 2 1/2 x 1/2	73 x 21.3 2.87 x 0.839	300 2.07	2 - M12 x 60	93 3.661	136 5.354	65 2.559	78 3.071	38 1.496	UL	FM
XGQT33S-65X20	65 x 20 2 1/2 x 3/4	73 x 26.9 2.87 x 1.059	300 2.07	2 - M12 x 60	93 3.661	136 5.354	65 2.559	78 3.071	38 1.496	UL	FM
XGQT33S-65X25-1	65 x 25 2 1/2 x 1	73 x 33.7 2.87 x 1.327	300 2.07	2 - M12 x 60	93 3.661	136 5.354	65 2.559	78 3.071	38 1.496	UL	FM
XGQT33S-65X32-1	65 x 32 2 1/2 x 1 1/4	73 x 42.4 2.87 x 1.669	300 2.07	2 - M12 x 60	93 3.661	136 5.354	65 2.559	84 3.307	51 2.007	UL	FM
XGQT33S-65X40	65 x 40 2 1/2 x 1 1/2	73 x 48.3 2.87 x 1.900	300 2.07	2 - M12 x 60	93 3.661	136 5.354	60 2.362	83 3.267	51 2.007	UL	FM
XGQT33S-65X25-2	65 x 25 2 1/2 x 1	76.1 x 33.7 2.996 x 1.327	300 2.07	2 - M12 x 65	102 4.016	144 5.669	67 2.638	77 3.031	38 1.496		
XGQT33S-65X32-2	65 x 32 2 1/2 x 1 1/4	76.1 x 42.4 2.996 x 1.669	300 2.07	2 - M12 x 65	102 4.016	138 5.433	67 2.638	83 3.266	51 2.008		
XGQT33S-65X15-2	60 x 15 3 x 1/2	88.9 x 21.3 3.500 x 0.839	300 2.07	2 - M12 x 65	114 4.488	152 5.984	74 2.913	77 3.031	38 1.496	UL	FM
XGQT33S-80X20	80 x 20 3 x 3/4	88.9 x 26.9 3.500 x 1.059	300 2.07	2 - M12 x 65	114 4.488	152 5.984	74 2.913	77 3.031	38 1.496	UL	FM
XGQT33S-60X25	60 x 25 3 x 1	88.9 x 33.7 3.500 x 1.327	300 2.07	2 - M12 x 65	114 4.488	152 5.984	74 2.913	77 3.031	38 1.496	UL	FM
XGQT33S-80X32	80 x 32 3 x 1 1/4	88.9 x 42.4 3.500 x 1.669	300 2.07	2 - M12 x 65	114 4.488	152 5.984	76 2.992	84 3.307	51 2.007	UL	FM
XGQT33S-60X40	60 x 40 3 x 1 1/2	88.9 x 48.3 3.500 x 1.900	300 2.07	2 - M12 x 65	114 4.488	152 5.984	73 2.874	92 3.622	51 2.007	UL	FM
XGQT33S-80X50	80 x 50 3 x 2	88.9 x 60.3 3.500 x 2.375	300 2.07	2 - M12 x 65	114 4.488	152 5.984	78 3.070	99 3.897	64 2.519	UL	FM
XGQT33S-100X25-1	100 x 25 4 x 1/2	114.3 x 21.3 4.500 x 0.839	300 2.07	2 - M12 x 65	140 5.512	180 7.086	88 3.465	88 3.031	38 1.496	UL	FM
XGQT33S-100X25-2	100 x 25 4 x 3/4	114.3 x 26.9 4.500 x 1.059	300 2.07	2 - M12 x 65	140 5.512	160 7.086	88 3.465	77 3.031	38 1.496	UL	FM
XGQT33S-100X25-3	100 x 25 4 x 1	114.3 x 33.7 4.500 x 1.327	300 2.07	2 - M12 x 65	140 5.512	160 7.086	88 3.465	77 3.031	38 1.496	UL	FM
XGQT33S-100X32	100 x 32 4 x 1 1/4	114.3 x 42.4 4.500 x 1.669	300 2.07	2 - M12 x 65	140 5.512	160 7.086	93 3.661	84 3.307	51 2.007	UL	FM
XGQT33S-100X50	100 x 50 4 x 2	114.3 x 60.3 4.500 x 2.375	300 2.07	2 - M12 x 65	140 5.512	180 7.086	93 3.661	103 4.055	64 2.519	UL	FM
XGQT33S-100X65-1	100 x 65 4 x 2 1/2	114.3 x 73 4.500 x 2.875	300 2.07	2 - M12 x 65	140 5.512	160 7.087	98 3.858	103 4.055	70 2.756		
XGQT33S-100X65-2	100 x 65 4 x 2 1/2	114.3 x 76.1 4.500 x 2.996	300 2.07	2 - M12 x 65	140 5.512	180 7.087	98 3.858	109 4.291	70 2.756		
XGQT33S-125X32-1	125 x 32 5 x 1 1/4	139.7 x 42.4 5.500 x 1.669	300 2.07	2 - M12 x 65	168 6.614	220 8.661	100 3.937	83 3.266	51 2.008		
XGQT33S-125X40-1	125 x 40 5 x 1 1/2	139.7 x 48.3 5.500 x 1.900	300 2.07	2 - M16 x 75	168 6.614	220 8.661	100 3.937	92 3.622	51 2.008		
XGQT33S-125X50-1	125 x 50 5 x 2	139.7 x 60.3 5.500 x 2.375	300 2.07	2 - M16 x 75	168 6.614	220 8.661	103 4.055	108 4.252	64 2.520		
XGQT33S-125X25	125 x 25 5 x 1	141.3 x 33.7 5.563 x 1.327	300 2.07	2 - M16 x 75	168 6.614	220 8.661	104 4.094	77 3.031	38 1.496	UL	FM
XGQT33S-125X32-2	125 x 32 5 x 1 1/4	141.3 x 42.4 5.563 x 1.669	300 2.07	2 - M16 x 75	168 6.614	220 8.661	104 4.094	95 3.740	51 2.007	UL	FM
XGQT33S-125X40-2	125 x 40 5 x 1 1/2	141.3 x 48.3 5.563 x 1.900	300 2.07	2 - M16 x 75	168 6.614	220 8.661	104 4.094	95 3.740	51 2.007	UL	FM
XGQT33S-125X50-2	125 x 50 5 x 2	141.3 x 60.3 5.563 x 2.375	300 2.07	2 - M16 x 75	168 6.614	220 8.661	104 4.094	100 3.937	64 2.519	UL	FM
XGQT33S-125X65	125 x 65 5 x 2 1/2	141.3 x 73 5.563 x 2.875	300 2.07	2 - M16 x 75	168 6.614	220 8.661	112 4.409	123 4.843	70 2.756	UL	FM
XGQT33S-150X32-1	150 x 32 6 x 1 1/4	165.1 x 42.4 6.500 x 1.669	300 2.07	2 - M16 x 85	194 7.638	247 9.724	112 4.409	83 3.266	51 2.008		
XGQT33S-150X50-1	150 x 50 6 x 2	165.1 x 60.3 6.500 x 2.375	300 2.07	2 - M16 x 85	194 7.638	247 9.724	116 4.567	109 4.291	64 2.520		
XGQT33S-150X65-1	150 x 65 6 x 2 1/2	165.1 x 76.1 6.500 x 2.996	300 2.07	2 - M16 x 85	194 7.638	247 9.724	125 4.921	109 4.291	70 2.756		
XGQT33S-150X80	150 x 80 6 x 3	165.1 x 88.9 6.500 x 3.500	300 2.07	2 - M16 x 85	194 7.638	247 9.724	125 4.921	135 5.315	89 3.504		
XGQT33S-150X25	150 x 25 6 x 1	168.3 x 33.7 6.625 x 1.327	300 2.07	2 - M16 x 85	198 7.795	247 9.724	120 4.724	77 3.031	38 1.496		
XGQT33S-150X32-2	150 x 32 6 x 1 1/4	168.3 x 42.4 6.625 x 1.669	300 2.07	2 - M16 x 85	198 7.795	247 9.724	120 4.724	82 3.228	51 2.007	UL	FM
XGQT33S-150X40	150 x 40 6 x 1 1/2	168.3 x 48.3 6.625 x 1.900	300 2.07	2 - M16 x 85	198 7.795	247 9.724	120 4.724	92 3.622	51 2.007	UL	FM
XGQT33S-150X50-2	150 x 50 6 x 2	168.3 x 60.3 6.625 x 2.375	300 2.07	2 - M16 x 85	198 7.795	250 9.842	120 4.724	108 4.251	64 2.519	UL	FM
XGQT33S-150X65-2	150 x 65 6 x 2 1/2	168.3 x 73 6.625 x 2.875	300 2.07	2 - M16 x 85	198 7.795	250 9.842	122 4.803	108 4.251	70 2.756	UL	FM



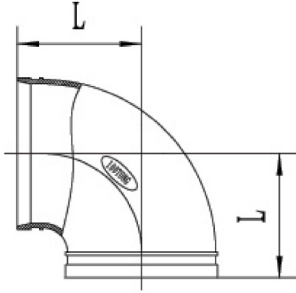
DESIGNED, INNOVATED &
ENGINEERED IN AUSTRALIA

90° Elbow
Model: XGQT06



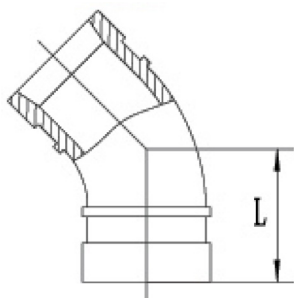
Technical Data						
Part No.	Size DN/in	Pipe O.D. mm/in	Working Pressure PSI/MPa	90° Elbow (Short) L mm/in	UL	FM
XGQT06-25	25 1	33.7 1.315	300 2.07	57 2.244	UL	FM
XGQT06-32	32 1 ¼	42.2 1.660	300 2.07	60 2.362	UL	FM
XGQT06-40	40 1 ½	48.3 1.900	300 2.07	60 2.362	UL	FM
XGQT06-50-1	50 2	57.0 2.244	300 2.07	70 2.755		
XGQT06-50-2	50 2	60.3 2.375	300 2.07	70 2.755	UL	FM
XGQT06-65-1	65 2 ½	73.0 2.875	300 2.07	76 2.992	UL	FM
XGQT06-65-2	65 2 ½	76.1 3.000	300 2.07	76 2.992	UL	FM
XGQT06-80	80 3	88.9 3.500	300 2.07	86 3.386	UL	FM
XGQT06-100-1	100 4	108.0 4.252	300 2.07	102 4.016	UL	FM
XGQT06-100-2	100 4	114.3 4.500	300 2.07	102 4.016	UL	FM
XGQT06-125-1	125 5	133.0 5.250	300 2.07	123 4.843	UL	FM
XGQT06-125-2	125 5	139.7 5.500	300 2.07	123 4.843	UL	FM
XGQT06-125-3	125 5	141.3 5.563	300 2.07	123 4.843	UL	FM
XGQT06-150-1	150 6	159.0 6.260	300 2.07	140 5.511	UL	FM
XGQT06-150-2	150 6	165.1 6.500	300 2.07	140 5.511	UL	FM
XGQT06-150-3	150 6	168.3 6.625	300 2.07	140 5.511	UL	FM
XGQT06-200-1	200 8	216.3 8.516	300 2.07	175 6.889	UL	FM
XGQT06-200-2	200 8	219.1 8.625	300 2.07	175 6.889	UL	FM
XGQT06-250-1	250 10	267.4 10.528	300 2.07	215 8.464		
XGQT06-250-2	250 10	273.0 10.750	300 2.07	215 8.464	UL	FM
XGQT06-300-1	300 12	318.5 12.539	300 2.07	245 9.645		
XGQT06-300-2	300 12	323.9 12.750	300 2.07	245 9.645	UL	FM
XGQT06-350	350 14	377.0 14.843	300 2.07	280 11.024		

90° Elbow
Model: XGQT06L



Technical Data						
Part No.	Size DN/in	Pipe O.D. mm/in	Working Pressure PSI/MPa	90° Elbow (Long) L mm/in	UL	FM
XGQT06L-25	25 1	33.7 1.315	300 2.07	57 2.24		
XGQT06L-32	32 1 ½	42.4 1.660	300 2.07	70 2.755	UL	FM
XGQT06L-40	40 1 ¼	48.3 1.900	300 2.07	70 2.755	UL	FM
XGQT06L-50	50 2	60.3 2.375	300 2.07	83 3.267	UL	FM
XGQT06L-65-1	65 2 ½	73.0 2.875	300 2.07	95 3.74	UL	FM
XGQT06L-65-2	65 2 ½	76.1 3.000	300 2.07	95 3.74	UL	FM
XGQT06L-80	80 3	88.9 3.500	300 2.07	108 4.251	UL	FM
XGQT06L-100	100 4	114.3 4.500	300 2.07	127 5	UL	FM
XGQT06L-125-1	125 5	139.7 5.500	300 2.07	140 5.511		
XGQT06L-125-2	125 5	141.3 5.563	300 2.07	140 5.511		
XGQT06L-150-1	150 6	165.1 6.500	300 2.07	165 6.496	UL	FM
XGQT06L-150-2	150 6	168.3 6.625	300 2.07	165 6.496	UL	FM
XGQT06L-200	200 8	219.1 8.625	300 2.07	197 7.755	UL	FM

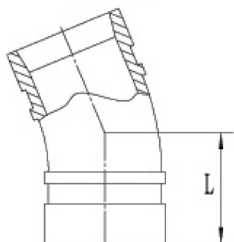
45° Elbow Model: XGQT07



Technical Data					
Part No.	Size DN/in	Pipe O.D. mm/in	45° Elbow L mm/in	UL	FM
XGQT07-25	25 1	33.7 1.315	38 1.496	UL	FM
XGQT07-32	32 1 ¼	42.4 1.660	44 1.732	UL	FM
XGQT07-40	40 1 ½	48.3 1.900	44 1.732	UL	FM
XGQT07-50	50 2	60.3 2.375	51 2.007	UL	FM
XGQT07-65-1	65 2 ½	73.0 2.875	57 2.244	UL	FM
XGQT07-65-2	65 2 ½	76.1 3.000	57 2.244	UL	FM
XGQT07-80	80 3	88.9 3.500	64 2.519	UL	FM
XGQT07-100-1	100 4	108.0 4.252	76 2.992	UL	FM
XGQT07-100-2	100 4	114.3 4.500	76 2.992	UL	FM
XGQT07-125-1	125 5	133.0 5.250	83 3.267	UL	FM
XGQT07-125-2	125 5	139.7 5.500	83 3.267	UL	FM
XGQT07-125-3	125 5	141.3 5.563	83 3.267	UL	FM
XGQT07-150-1	150 6	159.0 6.260	89 3.503	UL	FM
XGQT07-150-2	150 6	165.1 6.500	89 3.503	UL	FM
XGQT07-150-3	150 6	168.3 6.625	89 3.503	UL	FM
XGQT07-200-1	200 8	216.3 8.516	108 4.251	UL	FM
XGQT07-200-2	200 8	219.1 8.625	108 4.251	UL	FM
XGQT07-250-1	250 10	267 10.51	121 4.763		
XGQT07-250-2	250 10	273.0 10.750	121 4.763	UL	FM
XGQT07-300	300 12	323.9 12.750	133 5.236	UL	FM

The specific items list shall be subject to the public notice of FM and UL website.

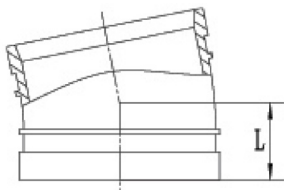
22.5° Elbow Model: XGQT09



Technical Data						
Part No.	Size DN/in	Pipe O.D. mm/in	Working Pressure PSI/MPa	22.5° Elbow Standard L mm/in	UL	FM
XGQT09-25	25 1	33.7 1.315	300 2.07	38.5 1.516	UL	FM
XGQT09-32	32 1 ¼	42.4 1.660	300 2.07	44 1.732	UL	FM
XGQT09-40	40 1 ½	48.3 1.900	300 2.07	44 1.732	UL	FM
XGQT09-50	50 2	60.3 2.375	300 2.07	48 1.89	UL	FM
XGQT09-65-1	65 2 ½	73.0 2.875	300 2.07	51 2	UL	FM
XGQT09-65-2	65 2 ½	76.1 3.000	300 2.07	51 2	UL	FM
XGQT09-80	80 3	88.9 3.500	300 2.07	57 2.244	UL	FM
XGQT09-100-1	100 4	108.0 4.252	300 2.07	73 2.874	UL	FM
XGQT09-100-2	100 4	114.3 4.500	300 2.07	73 2.874	UL	FM
XGQT09-125-1	125 5	139.7 5.500	300 2.07	73 2.874	UL	FM
XGQT09-125-2	125 5	141.3 5.563	300 2.07	73 2.874	UL	FM
XGQT09-150-1	150 6	159.0 6.260	300 2.07	79 3.11	UL	FM
XGQT09-150-2	150 6	165.1 6.500	300 2.07	79 3.11	UL	FM
XGQT09-150-3	150 6	168.3 6.625	300 2.07	79 3.11	UL	FM
XGQT09-200	200 8	219.1 8.625	300 2.07	83 3.27	UL	FM
XGQT09-250	250 10	273.0 10.750	300 2.07	111 4.37	UL	FM
XGQT09-300	300 12	323.9 12.750	300 2.07	124 4.88	UL	FM

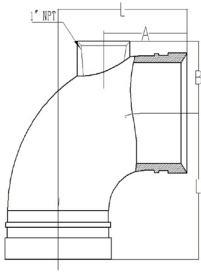
The specific items list shall be subject to the public notice of FM and UL website.

11.25° Elbow Model: XGQT10



Technical Data						
Part No.	Size DN/in	Pipe O.D. mm/in	Working Pressure PSI/MPa	11.25° Elbow Standard L mm/in	UL	FM
XGQT10-25	25 1	33.7 1.315	300 2.07	35 1.377	UL	FM
XGQT10-32	32 1 ¼	42.4 1.660	300 2.07	35 1.377	UL	FM
XGQT10-40	40 1 ½	48.3 1.900	300 2.07	35 1.377	UL	FM
XGQT10-50	50 2	60.3 2.375	300 2.07	35 1.377	UL	FM
XGQT10-65-1	65 2 ½	73.0 2.875	300 2.07	38 1.496	UL	FM
XGQT10-65-2	65 2 ½	76.1 3.000	300 2.07	38 1.496	UL	FM
XGQT10-80	80 3	88.9 3.500	300 2.07	38 1.496	UL	FM
XGQT10-100-1	100 4	108.0 4.252	300 2.07	44 1.732	UL	FM
XGQT10-100-2	100 4	114.3 4.500	300 2.07	48 1.889	UL	FM
XGQT10-125-1	125 5	139.7 5.500	300 2.07	51 2.007	UL	FM
XGQT10-125-2	125 5	141.3 5.563	300 2.07	51 2.007	UL	FM
XGQT10-150-1	150 6	159.0 6.260	300 2.07	51 2.007	UL	FM
XGQT10-150-2	150 6	165.1 6.500	300 2.07	51 2.007	UL	FM
XGQT10-150-3	150 6	168.3 6.625	300 2.07	51 2.007	UL	FM
XGQT10-200	200 8	219.1 8.625	300 2.07	51 2.007	UL	FM
XGQT10-250	250 10	273.0 10.750	300 2.07	54 2.125	UL	FM
XGQT10-300	300 12	323.9 12.750	300 2.07	57 2.244	UL	FM

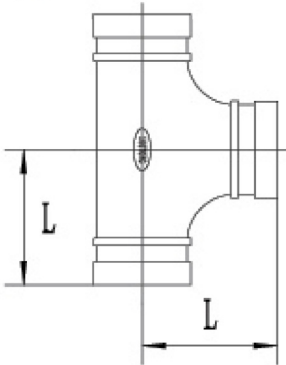
Drainage Elbow Model: XGQT06D



Technical Data

Part No.	Size DN/in	Pipe O.D. mm/in	Working Pressure PSI/MPa	Dimensions mm/in			UL	FM
				L	A	B		
XGQT06D-50	50 2	60.3 2.375	300 2.07	83 3.268	65 2.559	37.5 1.476	UL	FM
XGQT06D-65	65 2 1/2	73.0 2.875	300 2.07	95 3.740	70 2.756	43.5 1.713	UL	FM
XGQT06D-80	80 3	88.9 3.500	300 2.07	108 4.252	70 2.756	53 2.087	UL	FM
XGQT06D-100	100 4	114.3 4.500	300 2.07	127 5	70 2.756	66 2.598	UL	FM
XGQT06D-150	150 6	168.3 6.625	300 2.07	165 6.496	70 2.756	92.5 3.642	UL	FM
XGQT06D-200	200 8	219.1 8.625	300 2.07	197 7.756	70 2.756	116 4.567	UL	FM

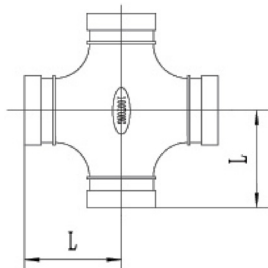
Tee
Model: XGQT12
& XGQT12L



Technical Data							
Size DN/in	Pipe O.D. mm/in	Tee				UL	FM
		Part No.	Long	Part No.	Short		
			L mm/in		L mm/in		
25 1	33.7 1.315	XGQT12L-25	57 2.244	XGQT12-25	57 2.244	UL	FM
32 1 ¼	42.4 1.660	XGQT12L-32	70 2.755	XGQT12-32	60 2.362	UL	FM
40 1 ½	48.3 1.900	XGQT12L-40	70 2.755	XGQT12-40	60 2.362	UL	FM
50 2	60.3 2.375	XGQT12L-50	83 3.267	XGQT12-50	70 2.755	UL	FM
65 2 ½	73.0 2.875	XGQT12L-65-1	95 3.74	XGQT12-65-1	76 2.992	UL	FM
65 2 ½	76.1 3.000	XGQT12L-65-2	95 3.74	XGQT12-65-2	76 2.992	UL	FM
80 3	88.9 3.500	XGQT12L-80	108 4.251	XGQT12-80	86 3.386	UL	FM
100 4	108.0 4.252	XGQT12L-100-1	127 5	XGQT12-100-1	102 4.016	UL	FM
100 4	114.3 4.500	XGQT12L-100-2	127 5	XGQT12-100-2	102 4.016	UL	FM
125 5	133.0 5.250	XGQT12L-125-1	140 5.511	XGQT12-125-1	122 4.803	UL	FM
125 5	139.7 5.500	XGQT12L-125-2	140 5.511	XGQT12-125-2	123 4.843	UL	FM
125 5	141.3 5.563	XGQT12L-125-3	140 5.511	XGQT12-125-3	123 4.843	UL	FM
150 6	159.0 6.260	XGQT12L-150-1	165 6.496	XGQT12-150-1	140 5.511	UL	FM
150 6	165.1 6.500	XGQT12L-150-2	165 6.496	XGQT12-150-2	140 5.511	UL	FM
150 6	168.3 6.625	XGQT12L-150-3	165 6.496	XGQT12-150-3	140 5.511	UL	FM
200 8	216.3 8.516	XGQT12L-200-1	197 7.755	XGQT12-200-1	175 6.889	UL	FM
200 8	219.1 8.625	XGQT12L-200-2	197 7.755	XGQT12-200-2	175 6.889	UL	FM
250 10	273.0 10.750	XGQT12L-250	229 9.015	XGQT12-250	215 8.464	UL	FM
300 12	323.9 12.750	XGQT12L-300	254 10	XGQT12-300	245 9.645	UL	FM

The specific items list shall be subject to the public notice of FM and UL website.

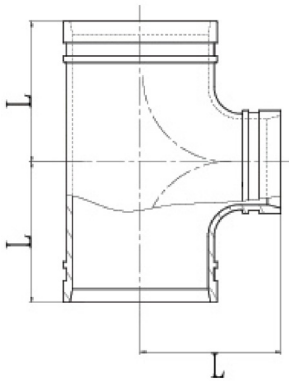
**Cross
Model: XGQT14**



Technical Data					
Part No.	Size DN/in	Pipe O.D. mm/in	Cross Standard L mm/in	UL	FM
XGQT14-25	25 1	33.7 1.315	57 2.244	UL	FM
XGQT14-32	32 1 ¼	42.4 1.66	60 2.362	UL	FM
XGQT14-40	40 1 ½	48.3 1.9	60 2.362	UL	FM
XGQT14-50	50 2	60.3 2.375	70 2.755	UL	FM
XGQT14-65-1	65 2 ½	73.0 2.875	76 2.992	UL	FM
XGQT14-65-2	65 2 ½	76.1 3.000	76 2.992	UL	FM
XGQT14-80	80 3	88.9 3.500	86 3.386	UL	FM
XGQT14-100-1	100 4	108.0 4.252	102 4.016	UL	FM
XGQT14-100-2	100 4	114.3 4.500	102 4.016	UL	FM
XGQT14-125-1	125 5	133 5.236	123 4.843	UL	FM
XGQT14-125-2	125 5	139.7 5.500	123 4.843	UL	FM
XGQT14-125-3	125 5	141.3 5.563	123 4.843	UL	FM
XGQT14-150-1	150 6	159.0 6.260	140 5.511	UL	FM
XGQT14-150-2	150 6	165.1 6.500	140 5.511	UL	FM
XGQT14-150-3	150 6	168.3 6.625	140 5.511	UL	FM
XGQT14-200	200 8	219.1 8.625	175 6.889	UL	FM
XGQT14-250	250 10	273.0 10.750	215 8.464	UL	FM
XGQT14-300	300 12	323.9 12.75	245 9.646	UL	FM

The specific items list shall be subject to the public notice of FM and UL website.

Reducing Tee Grooved Model: XGQT13

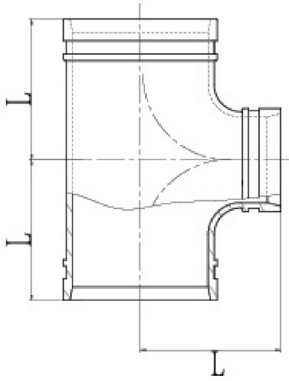


Technical Data						
Part No.	Nominal Size mm/in	Pipe O.D. mm/in Dxd	Working Pressure PSI/MPa	Dimensions L mm/in	UL	FM
XGQT13-40X32	40 x 32 1 1/2 x 1 1/4	48.3 x 48.3 x 42.4 1.900 x 1.900 x 1.660	400 2.75	60 2.362		
XGQT13-50X32	50 x 32 2 x 1 1/4	60.3 x 60.3 x 42.4 2.375 x 2.375 x 1.660	400 2.75	70 2.755	UL	FM
XGQT13-50X40	50 x 40 2 x 1 1/2	60.3 x 60.3 x 48.3 2.375 x 2.375 x 1.900	400 2.75	70 2.755	UL	FM
XGQT13-65X25-1	65 x 25 2 1/2 x 1	73.0 x 73.0 x 33.7 2.875 x 2.875 x 1.315	400 2.75	76 2.992	UL	FM
XGQT13-65X32-1	65 x 32 2 1/2 x 1 1/4	73.0 x 73.0 x 42.4 2.875 x 2.875 x 1.660	400 2.75	76 2.992	UL	FM
XGQT13-65X40-1	65 x 40 2 1/2 x 1 1/2	73.0 x 73.0 x 48.3 2.875 x 2.875 x 1.900	400 2.75	76 2.992	UL	FM
XGQT13-65X50-1	65 x 50 2 1/2 x 2	73.0 x 73.0 x 60.3 2.875 x 2.875 x 2.375	400 2.75	76 2.992	UL	FM
XGQT13-65X25-2	65 x 25 2 1/2 x 1	76.1 x 76.1 x 33.7 3.000 x 3.000 x 1.315	400 2.75	76 2.992	UL	FM
XGQT13-65X32-2	65 x 32 2 1/2 x 1 1/4	76.1 x 76.1 x 42.4 3.000 x 3.000 x 1.660	400 2.75	76 2.992	UL	FM
XGQT13-65X40-2	65 x 40 2 1/2 x 1 1/2	76.1 x 76.1 x 48.3 3.000 x 3.000 x 1.900	400 2.75	76 2.992	UL	FM
XGQT13-65X50-2	65 x 50 2 1/2 x 2	76.1 x 76.1 x 60.3 3.000 x 3.000 x 2.375	232 1.6	76 2.992	UL	FM
XGQT13-80X25	80 x 25 3 x 1	88.9 x 88.9 x 33.7 3.500 x 3.500 x 1.315	400 2.75	86 3.386	UL	FM
XGQT13-80X32	80 x 32 3 x 1 1/4	88.9 x 88.9 x 42.4 3.500 x 3.500 x 1.660	400 2.75	86 3.386	UL	FM
XGQT13-80X40	80 x 40 3 x 1 1/2	88.9 x 88.9 x 48.3 3.500 x 3.500 x 1.900	400 2.75	86 3.386	UL	FM
XGQT13-80X50	80 x 50 3 x 2	88.9 x 88.9 x 60.3 3.500 x 3.500 x 2.375	400 2.75	86 3.386	UL	FM
XGQT13-80X65-1	80 x 65 3 x 2 1/2	88.9 x 88.9 x 73.0 3.500 x 3.500 x 2.875	400 2.75	86 3.386	UL	FM
XGQT13-80X65-2	80 x 65 3 x 2 1/2	88.9 x 88.9 x 76.1 3.500 x 3.500 x 3.000	232 1.6	86 3.386	UL	FM
XGQT13-100X25	100 x 25 4 x 1	114.3 x 114.3 x 33.7 4.500 x 4.500 x 1.315	400 2.75	102 4.016	UL	FM
XGQT13-100X40	100 x 40 4 x 1 1/2	114.3 x 114.3 x 48.3 4.500 x 4.500 x 1.900	400 2.75	102 4.016	UL	FM
XGQT13-100X50	100 x 50 4 x 2	114.3 x 114.3 x 60.3 4.500 x 4.500 x 2.375	400 2.75	102 4.016	UL	FM
XGQT13-100X65-1	100 x 65 4 x 2 1/2	114.3 x 114.3 x 73.0 4.500 x 4.500 x 2.875	400 2.75	102 4.016	UL	FM
XGQT13-100X65-2	100 x 65 4 x 2 1/2	114.3 x 114.3 x 76.1 4.500 x 4.500 x 3.000	400 2.75	102 4.016	UL	FM
XGQT13-100X80	100 x 80 4 x 3	114.3 x 114.3 x 88.9 4.500 x 4.500 x 3.500	400 2.75	102 4.016	UL	FM
XGQT13-125X50-1	125 x 50 5 x 2	139.7 x 139.7 x 60.3 5.500 x 5.500 x 2.375	300 2.07	122 4.803	UL	FM
XGQT13-125X65-1	125 x 65 5 x 2 1/2	139.7 x 139.7 x 76.1 5.500 x 5.500 x 3.000	300 2.07	122 4.843	UL	FM
XGQT13-125X80-1	125 x 80 5 x 3	139.7 x 139.7 x 88.9 5.500 x 5.500 x 3.500	300 2.07	122 4.843	UL	FM
XGQT13-125X100	125 x 100 5 x 4	139.7 x 139.7 x 114.3 5.500 x 5.500 x 4.500	300 2.07	122 4.843		FM
XGQT13-125X50-2	125 x 50 5 x 2	141.3 x 141.3 x 60.3 5.563 x 5.563 x 2.375	300 2.07	123 4.843	UL	
XGQT13-125X65-2	125 x 65 5 x 2 1/2	141.3 x 141.3 x 76.1 5.563 x 5.563 x 3.000	300 2.07	123 4.843	UL	
XGQT13-125X80-2	125 x 80 5 x 3	141.3 x 141.3 x 88.9 5.563 x 5.563 x 3.500	300 2.07	123 4.843	UL	
XGQT13-150X40-1	150 x 40 6 x 1 1/2	165.1 x 165.1 x 48.3 6.500 x 6.500 x 1.900	400 2.75	140 5.511	UL	FM
XGQT13-150X50-1	150 x 50 6 x 2	165.1 x 165.1 x 60.3 6.500 x 6.500 x 2.375	400 2.75	140 5.511	UL	FM
XGQT13-150X65-1	150 x 65 6 x 2 1/2	165.1 x 165.1 x 76.1 0.500 x 0.500 x 3.000	400 2.75	140 5.511	UL	FM
XGQT13-150X80-1	150 x 80 6 x 3	165.1 x 165.1 x 88.9 6.500 x 6.500 x 3.500	400 2.75	140 5.511	UL	FM
XGQT13-150X100-1	150 x 100 6 x 4	165.1 x 165.1 x 114.3 6.500 x 6.500 x 4.500	400 2.75	140 5.511	UL	FM
XGQT13-150X125	150 x 125 6 x 5	165.1 x 165.1 x 139.7 6.500 x 6.500 x 5.500	400 2.75	140 5.511		FM
XGQT13-150X40-2	150 x 40 6 x 1 1/2	168.3 x 168.3 x 48.3 6.625 x 6.625 x 1.900	400 2.75	140 5.511	UL	FM
XGQT13-150X50-2	150 x 50 6 x 2	168.3 x 168.3 x 60.3 6.625 x 6.625 x 2.375	400 2.75	140 5.511	UL	FM
XGQT13-150X65-2	150 x 65 6 x 2 1/2	168.3 x 168.3 x 73.0 6.625 x 6.625 x 2.875	400 2.75	140 5.511	UL	
XGQT13-150X65-3	150 x 65 6 x 2 1/2	168.3 x 168.3 x 76.1 6.625 x 6.625 x 3.000	400 2.75	140 5.511	UL	FM
XGQT13-150X80-2	150 x 80 6 x 3	168.3 x 168.3 x 88.9 6.625 x 6.625 x 3.500	400 2.75	140 5.511	UL	FM
XGQT13-150x100-2	150 x 100 6 x 4	168.3 x 168.3 x 114.3 6.625 x 6.625 x 4.500	400 2.75	140 5.511	UL	FM

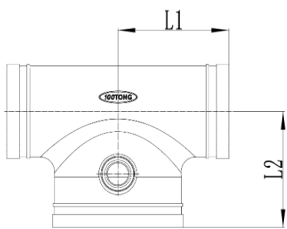


DESIGNED, INNOVATED &
ENGINEERED IN AUSTRALIA

Reducing Tee Grooved Model: XGQT13



Reducing Tee Model: XGQT13



rhinotek

DESIGNED, INNOVATED &
ENGINEERED IN AUSTRALIA

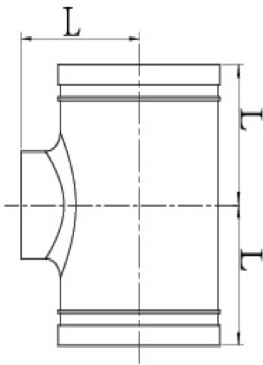
Technical Data

Part No.	Nominal Size mm/in	Pipe O.D. mm/in Dxd	Working Pressure PSI/MPa	Dimensions L mm/in	UL	FM
XGQT13-150X125	150 x 125 6 x 5	168.3 x 168.3 x 139.7 6.625 x 6.625 x 5.500	400 2.75	140 5.511		
XGQT13-200X50	200 x 50 8 x 2	219.1 x 219.1 x 60.3 8.625 x 8.625 x 2.375	300 2.07	175 6.889		
XGQT13-200X65-1	200 x 65 8 x 2 ½	219.1 x 219.1 x 73.0 8.625 x 8.625 x 2.875	300 2.07	175 6.889	UL	
XGQT13-200X65-2	200 x 65 8 x 2 ½	219.3 x 219.3 x 76.3 8.625 x 8.625 x 3.000	232 1.6	175 6.889	UL	
XGQT13-200X80-1	200 x 80 8 x 3	219.1 x 219.1 x 88.9 8.625 x 8.625 x 3.500	232 1.6	175 6.889	UL	
XGQT13-200X100-1	200 x 100 8 x 4	219.1 x 219.1 x 114.3 8.625 x 8.625 x 4.500	300 2.07	175 6.889	UL	FM
XGQT13-200X125-1	200 x 125 8 x 5	219.1 x 219.1 x 139.7 8.625 x 8.625 x 5.500	232 1.6	175 6.889		
XGQT13-200X125-2	200 x 125 8 x 5	219.1 x 219.1 x 141.3 8.625 x 8.625 x 5.563	232 1.6	175 6.889	UL	
XGQT13-200X150-1	200 x 150 8 x 6	219.1 x 219.1 x 165.1 8.625 x 8.625 x 6.500	300 2.07	175 6.889	UL	FM
XGQT13-200X150-2	200 x 150 8 x 6	219.1 x 219.1 x 168.3 8.625 x 8.625 x 6.625	300 2.07	175 6.889	UL	FM
XGQT13-200X100-2	250 x 100 10 x 4	273.0 x 273.0 x 114.3 10.750 x 10.750 x 4.500	300 2.07	215 8.465	UL	
XGQT13-200X125-2	250 x 125 10 x 5	273.0 x 273.0 x 139.7 10.750 x 10.750 x 5.500	300 2.07	215 8.465		
XGQT13-200X150-3	250 x 150 10 x 6	273.0 x 273.0 x 165.1 10.750 x 10.750 x 6.500	300 2.07	215 8.465		
XGQT13-200X150-4	250 x 150 10 x 6	273 x 273 x 168.3 10.750 x 10.750 x 6.625	300 2.07	215 8.465	UL	FM
XGQT13-250X200	250 x 200 10 x 8	273.0 x 273.0 x 219.1 10.750 x 10.750 x 8.625	300 2.07	215 8.465	UL	FM
XGQT13-300X100	300 x 100 12 x 4	323.9 x 323.9 x 114.3 12.750 x 12.750 x 4.500	300 2.07	245 9.646	UL	FM
XGQT13-300X150	300 x 150 12 x 6	323.9 x 323.9 x 165.1 12.750 x 12.750 x 6.500	300 2.07	245 9.646		
XGQT13-300X200	300 x 200 12 x 8	323.9 x 323.9 x 219.1 12.750 x 12.750 x 8.625	300 2.07	245 9.646	UL	
XGQT13-300X250	300 x 250 12 x 10	323.9 x 323.9 x 273.0 12.750 x 12.750 x 10.75	300 2.07	245 9.646	UL	FM

Technical Data

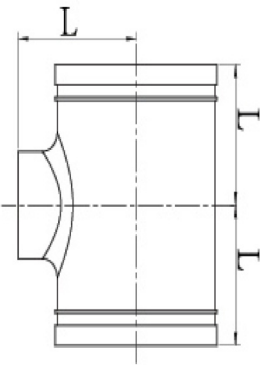
Part No.	Nominal Size mm/in	Pipe O.D. mm/in Dxd	Working Pressure PSI/MPa	L1	L2	UL	FM
XGQT13-80X80X100	80 x 80 x 100 3 x 3 x 4	88.9 x 88.9 x 114.3 3.500 x 3.500 x 4.500	300 2.07	115 5.512	130 5.512	UL	FM
XGQT13-80X80X150-1	80 x 80 x 150 3 x 3 x 6	88.9 x 88.9 x 165.1 3.500 x 3.500 x 6.500	300 2.07	140 5.512	140 5.512	UL	FM
XGQT13-80X80X150-2	80 x 80 x 150 4 x 4 x 6	114.3 x 114.3 x 165.1 4.500 x 4.500 x 6.500	300 2.07	140 5.512	140 5.512	UL	FM

Reducing Tee Threaded Model: XGQT13S



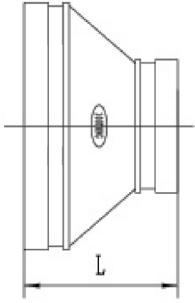
Technical Data						
Part No.	Nominal Size mm/in	Pipe O.D. mm/in Dxd	Working Pressure PSI/MPa	Dimensions L mm/in	UL	FM
XGQT13S-32X25	32 x 25 1 ¼ x 1	42.4 x 42.4 x 33.7 1.660 x 1.660 x 1.315	232 1.6	60 2.362	UL	
XGQT13S-40X25	40 x 25 1 ½ x 1	48.3 x 48.3 x 33.7 1.900 x 1.900 x 1.315	232 1.6	60 2.362	UL	
XGQT13S-40X32	40 x 32 1 ½ x 1 ¼	48.3 x 48.3 x 42.4 1.900 x 1.900 x 1.660	232 1.6	60 2.362	UL	
XGQT13S-50X25	50 x 25 2 x 1	60.3 x 60.3 x 33.7 2.375 x 2.375 x 1.315	300 2.07	70 2.755	UL	FM
XGQT13S-50X32	50 x 32 2 x 1 ¼	60.3 x 60.3 x 42.4 2.375 x 2.375 x 1.660	300 2.07	70 2.755	UL	FM
XGQT13S-50X40	50 x 40 2 x 1 ½	60.3 x 60.3 x 48.3 2.375 x 2.375 x 1.900	300 2.07	70 2.755	UL	FM
XGQT13S-65X25-1	65 x 25 2 ½ x 1	73.0 x 73.0 x 33.7 2.875 x 2.875 x 1.315	400 2.75	76 2.992	UL	FM
XGQT13S-65X32-1	65 x 32 2 ½ x 1 ¼	73.0 x 73.0 x 42.4 2.875 x 2.875 x 1.660	400 2.75	76 2.992	UL	FM
XGQT13S-65X40-1	65 x 40 2 ½ x 1 ½	73.0 x 73.0 x 48.3 2.875 x 2.875 x 1.900	400 2.75	76 2.992	UL	FM
XGQT13S-65X50-1	65 x 50 2 ½ x 2	73.0 x 73.0 x 60.3 2.875 x 2.875 x 2.375	400 2.75	76 2.992	UL	FM
XGQT13S-65X25-2	65 x 25 2 ½ x 1	76.1 x 76.1 x 33.7 3.000 x 3.000 x 1.315	300 2.07	76 2.992	UL	FM
XGQT13S-65X32-2	65 x 32 2 ½ x 1 ¼	76.1 x 76.1 x 42.4 3.000 x 3.000 x 1.660	300 2.07	76 2.992	UL	FM
XGQT13S-65X40-2	65 x 40 2 ½ x 1 ½	76.1 x 76.1 x 48.3 3.000 x 3.000 x 1.900	300 2.07	76 2.992	UL	FM
XGQT13S-65X50-2	65 x 50 2 ½ x 2	76.1 x 76.1 x 60.3 3.000 x 3.000 x 2.375	300 2.07	76 2.992	UL	
XGQT13S-80X25	80 x 25 3 x 1	88.9 x 88.9 x 33.7 3.500 x 3.500 x 1.315	300 2.07	86 3.386	UL	FM
XGQT13S-80X32	80 x 32 3 x 1 ¼	88.9 x 88.9 x 42.4 3.500 x 3.500 x 1.660	300 2.07	86 3.386	UL	FM
XGQT13S-80X40	80 x 40 3 x 1 ½	88.9 x 88.9 x 48.3 3.500 x 3.500 x 1.900	300 2.07	86 3.386	UL	FM
XGQT13S-80X50	80 x 50 3 x 2	88.9 x 88.9 x 60.3 3.500 x 3.500 x 2.375	300 2.07	86 3.386	UL	FM
XGQT13S-80X65	80 x 65 3 x 2 ½	88.9 x 88.9 x 76.1 3.500 x 3.500 x 3.000	232 1.6	86 3.386	UL	
XGQT13S-100X25	100 x 25 4 x 1	114.3 x 114.3 x 33.7 4.500 x 4.500 x 1.315	300 2.07	102 4.016	UL	FM
XGQT13S-100X32	100 x 32 4 x 1 ¼	114.3 x 114.3 x 42.4 4.500 x 4.500 x 1.660	300 2.07	102 4.016	UL	FM
XGQT13S-100X40	100 x 40 4 x 1 ½	114.3 x 114.3 x 48.3 4.500 x 4.500 x 1.900	300 2.07	102 4.016	UL	FM
XGQT13S-100X50	100 x 50 4 x 2	114.3 x 114.3 x 60.3 4.500 x 4.500 x 2.375	300 2.07	102 4.016	UL	FM
XGQT13S-100X65-1	100 x 65 4 x 2 ½	114.3 x 114.3 x 73.0 4.500 x 4.500 x 2.875	300 2.07	102 4.016		
XGQT13S-100X65-2	100 x 65 4 x 2 ½	114.3 x 114.3 x 76.1 4.500 x 4.500 x 3.000	300 2.07	102 4.016	UL	FM
XGQT13S-100X80	100 x 80 4 x 3	114.3 x 114.3 x 88.9 4.500 x 4.500 x 3.500	300 2.07	102 4.016	UL	FM
XGQT13S-125X25-1	125 x 25 5 x 1	139.7 x 139.7 x 33.7 5.500 x 5.500 x 1.315	300 2.07	122 4.803	UL	FM
XGQT13S-125X32-1	125 x 32 5 x 1 ¼	139.7 x 139.7 x 42.4 5.500 x 5.500 x 1.660	300 2.07	122 4.803	UL	FM

Reducing Tee Threaded Model: XGQT13S



Technical Data						
Part No.	Nominal Size mm/in	Pipe O.D. mm/in Dxd	Working Pressure PSI/MPa	Dimensions L mm/in	UL	FM
XGQT13S-125X40-1	125 x 40 5 x 1 ½	139.7 x 139.7 x 48.3 5.500 x 5.500 x 1.900	300 2.07	122 4.803	UL	FM
XGQT13S-125X50-1	125 x 50 5 x 2	139.7 x 139.7 x 60.3 5.500 x 5.500 x 2.375	300 2.07	122 4.803	UL	FM
XGQT13S-125X65-1	125 x 65 5 x 2 ½	139.7 x 139.7 x 76.1 5.500 x 5.500 x 3.000	300 2.07	122 4.803	UL	FM
XGQT13S-125X80	125 x 80 5 x 3	139.7 x 139.7 x 88.9 5.500 x 5.500 x 3.500	300 2.07	122 4.803	UL	FM
XGQT13S-125X25-2	125 x 25 5 x 1	141.3 x 141.3 x 33.7 5.563 x 5.563 x 1.315	300 2.07	122 4.803	UL	
XGQT13S-125X32-2	125 x 32 5 x 1 ¼	141.3 x 141.3 x 42.4 5.563 x 5.563 x 1.660	300 2.07	122 4.803	UL	
XGQT13S-125X40-2	125 x 40 5 x 1 ½	141.3 x 141.3 x 48.3 5.563 x 5.563 x 1.900	300 2.07	122 4.803	UL	
XGQT13S-125X50-2	125 x 50 5 x 2	141.3 x 141.3 x 60.3 5.563 x 5.563 x 2.375	300 2.07	122 4.803	UL	
XGQT13S-125X65-2	125 x 65 5 x 2 ½	141.3 x 141.3 x 76.1 5.563 x 5.563 x 3.000	300 2.07	122 4.803	UL	
XGQT13S-150X25-1	150 x 25 6 x 1	165.1 x 165.1 x 33.7 6.500 x 6.500 x 1.315	300 2.07	140 5.511	UL	FM
XGQT13S-150X32-1	150 x 32 6 x 1 ¼	165.1 x 165.1 x 42.4 6.500 x 6.500 x 1.660	300 2.07	140 5.511	UL	FM
XGQT13S-150X40-1	150 x 40 6 x 1 ½	165.1 x 165.1 x 48.3 6.500 x 6.500 x 1.900	300 2.07	140 5.511	UL	FM
XGQT13S-150X50-1	150 x 50 6 x 2	165.1 x 165.1 x 60.3 6.500 x 6.500 x 2.375	300 2.07	140 5.511	UL	FM
XGQT13S-150X65-1	150 x 65 6 x 2 ½	165.1 x 165.1 x 76.1 6.500 x 6.500 x 3.000	300 2.07	140 5.511	UL	FM
XGQT13S-150X80-1	150 x 80 6 x 3	165.1 x 165.1 x 88.9 6.500 x 6.500 x 3.500	300 2.07	140 5.511	UL	FM
XGQT13S-150X32-2	150 x 32 6 x 1 ¼	168.3 x 168.3 x 42.4 6.625 x 6.625 x 1.660	300 2.07	140 5.511	UL	FM
XGQT13S-150X40-2	150 x 40 6 x 1 ½	168.3 x 168.3 x 48.3 6.625 x 6.625 x 1.900	300 2.07	140 5.511	UL	FM
XGQT13S-150X50-2	150 x 50 6 x 2	168.3 x 168.3 x 60.3 6.625 x 6.625 x 2.375	300 2.07	140 5.511	UL	FM
XGQT13S-150X65-2	150 x 65 6 x 2 ½	168.3 x 168.3 x 76.1 6.625 x 6.625 x 3.000	300 2.07	140 5.511	UL	FM
XGQT13S-150X80-2	150 x 80 6 x 3	168.3 x 168.3 x 88.9 6.625 x 6.625 x 3.500	300 2.07	140 5.511	UL	FM
XGQT13S-200X80	200 x 80 8 x 3	219.1 x 219.1 x 88.9 8.625 x 8.625 x 3.500	300 2.07	175 6.889		

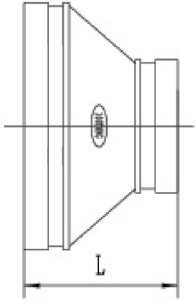
Grooved Reducer Model: XGQT16



Technical Data

Part No.	Nominal Size mm/in	Pipe O.D. mm/in Dxd	Working Pressure PSI/MPa	Dimensions L mm/in	UL	FM
XGQT16-32X25	32 x 25 1 ¼ x 1	42.4 x 33.7 1.669 x 1.327	400 2.75	64 2.52	UL	FM
XGQT16-40X25	40 x 25 1 ½ x 1	48.3 x 33.7 1.900 x 1.327	400 2.75	64 2.52	UL	FM
XGQT16-40X32	40 x 32 1 ½ x 1 ¼	48.3 x 42.4 1.900 x 1.669	400 2.75	64 2.52	UL	FM
XGQT16-50X25	50 x 25 2 x 1	60.3 x 33.7 2.375 x 1.327	400 2.75	64 2.52	UL	FM
XGQT16-50X32	50 x 32 2 x 1 ¼	60.3 x 42.4 2.375 x 1.669	400 2.75	64 2.52	UL	FM
XGQT16-50X40	50 x 40 2 x 1 ½	60.3 x 48.3 2.375 x 1.900	400 2.75	64 2.52	UL	FM
XGQT16-65X25-1	65 x 25 2 ½ x 1	73 x 33.7 2.87 x 1.327	400 2.75	64 2.52		
XGQT16-65X32-1	65 x 32 2 ½ x 1 ¼	73 x 42.4 2.87 x 1.669	400 2.75	64 2.52	UL	FM
XGQT16-65X40-1	65 x 40 2 ½ x 1 ½	73 x 48.3 2.87 x 1.900	400 2.75	64 2.52	UL	FM
XGQT16-65X50-1	65 x 50 2 ½ x 2	73 x 60.3 2.87 x 2.375	400 2.75	64 2.52	UL	FM
XGQT16-65X25-2	65 x 25 2 ½ x 1	76.1 x 33.7 2.996 x 1.327	400 2.75	64 2.52	UL	FM
XGQT16-65X32-2	65 x 32 2 ½ x 1 ¼	76.1 x 42.4 2.996 x 1.669	400 2.75	64 2.52	UL	FM
XGQT16-65X40-2	65 x 40 2 ½ x 1 ½	76.1 x 48.3 2.996 x 1.900	400 2.75	64 2.52	UL	FM
XGQT16-65X50-2	65 x 50 2 ½ x 2	76.1 x 60.3 2.996 x 2.375	400 2.75	64 2.52	UL	FM
XGQT16-80X32	80 x 32 3 x 1 ¼	88.9 x 42.4 3.500 x 1.669	400 2.75	64 2.52	UL	FM
XGQT16-80X40	80 x 40 3 x 1 ½	88.9 x 48.3 3.500 x 1.900	400 2.75	64 2.52	UL	FM
XGQT16-80X50	80 x 50 3 x 2	88.9 x 60.3 3.500 x 2.375	400 2.75	64 2.52	UL	FM
XGQT16-80X65-1	80 x 65 3 x 2 ½	88.9 x 73.0 3.500 x 2.875	400 2.75	64 2.52	UL	FM
XGQT16-80X65-2	80 x 65 3 x 2 ½	88.9 x 76.1 3.500 x 3.000	400 2.75	64 2.52	UL	FM
XGQT16-100X32	100 x 32 4 x 1 ¼	114.3 x 42.4 4.500 x 1.669	400 2.75	76 3.00	UL	FM
XGQT16-100X40	100 x 40 4 x 1 ½	114.3 x 48.3 4.500 x 1.900	400 2.75	76 3.00	UL	FM
XGQT16-100X50	100 x 50 4 x 2	114.3 x 60.3 4.500 x 2.375	400 2.75	76 3.00	UL	FM
XGQT16-100X65-1	100 x 65 4 x 2 ½	114.3 x 73.0 4.500 x 2.875	400 2.75	76 3.00	UL	FM
XGQT16-100X65-2	100 x 65 4 x 2 ½	114.3 x 76.1 4.500 x 3.000	400 2.75	76 3.00	UL	FM
XGQT16-100X80	100 x 80 4 x 3	114.3 x 88.9 4.500 x 3.500	400 2.75	76 3.00	UL	FM
XGQT16-125X32	125 x 32 5 x 1 ¼	139.7 x 42.4 5.500 x 1.669	400 2.75	89 3.50	UL	FM
XGQT16-125X40	125 x 40 5 x 1 ½	139.7 x 48.3 5.500 x 1.900	300 2.07	89 3.50	UL	FM
XGQT16-125X50-1	125 x 50 5 x 2	139.7 x 60.3 5.500 x 2.375	300 2.07	89 3.50	UL	FM
XGQT16-125X65-1	125 x 65 5 x 2 ½	139.7 x 76.1 5.500 x 3.000	300 2.07	89 3.50	UL	FM
XGQT16-125X80	125 x 80 5 x 3	139.7 x 88.9 5.500 x 3.500	300 2.07	89 3.50	UL	FM
XGQT16-125X100-1	125 x 100 5 x 4	139.7 x 114.3 5.500 x 4.500	300 2.07	89 3.50	UL	FM
XGQT16-125X50-2	125 x 50 5 x 2	141.3 x 60.3 5.563 x 2.375	300 2.07	89 3.50	UL	
XGQT16-125X65-2	125 x 65 5 x 2 ½	141.3 x 76.1 5.563 x 3.000	300 2.07	89 3.50	UL	
XGQT16-125X100-2	125 x 100 5 x 4	141.3 x 114.3 5.563 x 4.500	300 2.07	89 3.50	UL	

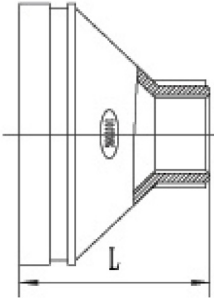
Grooved Reducer Model: XGQT16



Technical Data

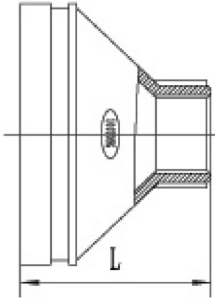
Part No.	Nominal Size mm/in	Pipe O.D. mm/in Dxd	Working Pressure PSI/MPa	Dimensions L mm/in	UL	FM
XGQT16-150X50-1	150 x 50 6 x 2	165.1 x 60.3 6.500 x 2.375	300 2.07	102 4.02	UL	FM
XGQT16-150X65-1	150 x 65 6 x 2 1/2	165.1 x 76.1 6.500 x 3.000	300 2.07	102 4.02	UL	FM
XGQT16-150X80-1	150 x 80 6 x 3	165.1 x 88.9 6.500 x 3.500	300 2.07	102 4.02	UL	FM
XGQT16-150X100-1	150 x 100 6 x 4	165.1 x 114.3 6.500 x 4.500	300 2.07	102 4.02	UL	FM
XGQT16-150X125-1	150 x 125 6 x 5	165.1 x 139.7 6.500 x 5.500	300 2.07	102 4.02	UL	FM
XGQT16-150X125-2	150 x 125 6 x 5	165.1 x 141.3 6.500 x 5.563	300 2.07	102 4.02	UL	
XGQT16-150X50-2	150 x 50 6 x 2	168.3 x 60.3 6.625 x 2.375	300 2.07	102 4.02	UL	FM
XGQT16-150X65-2	150 x 65 6 x 2 1/2	168.3 x 73 6.625 x 2.875	300 2.07	102 4.02	UL	FM
XGQT16-150X65-3	150 x 65 6 x 2 1/2	168.3 x 76.1 6.625 x 3.000	300 2.07	102 4.02	UL	FM
XGQT16-150X80-2	150 x 80 6 x 3	168.3 x 88.9 6.625 x 3.500	300 2.07	102 4.02	UL	FM
XGQT16-150X100-2	150 x 100 6 x 4	168.3 x 114.3 6.625 x 4.500	300 2.07	102 4.02	UL	FM
XGQT16-150X125-3	150 x 125 6 x 5	168.3 x 139.7 6.625 x 5.500	300 2.07	102 4.02	UL	FM
XGQT16-200X150	200 x 150 8 x 6	216.3 x 165.1 8.625 x 6.500	300 2.07	127 5.00		
XGQT16-200X50	200 x 50 8 x 2	219.1 x 60.3 8.625 x 2.375	300 2.07	127 5.00	UL	FM
XGQT16-200X65-1	200 x 65 8 x 2 1/2	219.1 x 73 8.625 x 2.875	300 2.07	127 5.00	UL	FM
XGQT16-200X65-2	200 x 65 8 x 2 1/2	219.1 x 76.1 8.625 x 3.000	300 2.07	127 5.00	UL	FM
XGQT16-200X80	200 x 80 8 x 3	219.1 x 88.9 8.625 x 3.500	300 2.07	127 5.00	UL	FM
XGQT16-200X100	200 x 100 8 x 4	219.1 x 114.3 8.625 x 4.500	300 2.07	127 5.00	UL	FM
XGQT16-200X125-1	200 x 125 8 x 5	219.1 x 139.7 8.625 x 5.500	300 2.07	127 5.00	UL	FM
XGQT16-200X125-2	200 x 125 8 x 5	219.3 x 141.3 8.625 x 5.563	300 2.07	127 5.00	UL	
XGQT16-200X150-1	200 x 150 8 x 6	219.1 x 165.1 8.625 x 6.500	300 2.07	127 5.00	UL	FM
XGQT16-200X150-2	200 x 150 8 x 6	219.1 x 168.3 8.625 x 6.625	300 2.07	127 5.00	UL	FM
XGQT16-250X100	250 x 100 10 x 4	273.0 x 114.3 10.75 x 4.500	300 2.07	152 5.98	UL	FM
XGQT16-250X150-1	250 x 150 10 x 6	273.0 x 165.1 10.75 x 6.500	300 2.07	152 5.98		FM
XGQT16-250X150-2	250 x 150 10 x 6	273.0 x 168.3 10.75 x 6.625	300 2.07	152 5.98	UL	FM
XGQT16-250X200	250 x 200 10 x 8	273.0 x 219.1 10.75 x 8.625	300 2.07	152 5.98	UL	FM
XGQT16-300X100	300 x 100 12 x 4	323.9 x 114.3 12.570 x 4.500	300 2.07	178 7.00		FM
XGQT16-300X125	300 x 125 12 x 5	323.9 x 139.7 12.570 x 5.500	300 2.07	178 7.00		FM
XGQT16-300X150-1	300 x 150 12 x 6	323.9 x 165.1 12.75 x 6.500	300 2.07	178 7.00		FM
XGQT16-300X150-2	300 x 150 12 x 6	323.9 x 168.3 12.75 x 6.500	300 2.07	178 7.00	UL	
XGQT16-300X200	300 x 200 12 x 8	323.9 x 219.1 12.75 x 8.625	300 2.07	178 7.00	UL	FM
XGQT16-300X250	300 x 250 12 x 10	323.9 x 273 12.75 x 10.75	300 2.07	178 7.00	UL	FM

Threaded Reducer Model: XGQT16S



Technical Data						
Part No.	Nominal Size mm/in	Pipe O.D. mm/in Dxd	Working Pressure PSI/MPa	Dimensions L mm/in	UL	FM
XGQT16S-40X25	40 x 25 1 1/2 x 1	48.3 x 33.7 1.900 x 1.327	400 2.75	64 2.52	UL	
XGQT16S-50X25	50 x 25 2 x 1	60.3 x 33.7 2.375 x 1.327	400 2.75	64 2.52	UL	FM
XGQT16S-50X32	50 x 32 2 x 1 1/4	60.3 x 42.4 2.375 x 1.669	400 2.75	64 2.52	UL	FM
XGQT16S-50X40	50 x 40 2 x 1 1/2	60.3 x 48.3 2.375 x 1.900	400 2.75	64 2.52	UL	FM
XGQT16S-65X25-1	65 x 25 2 1/2 x 1	73 x 33.7 2.87 x 1.327	400 2.75	64 2.52	UL	FM
XGQT16S-65X32-1	65 x 32 2 1/2 x 1 1/4	73 x 42.4 2.87 x 1.669	400 2.75	64 2.52	UL	FM
XGQT16S-65X40-1	65 x 40 2 1/2 x 1 1/2	73 x 48.3 2.87 x 1.900	400 2.75	64 2.52	UL	FM
XGQT16S-65X50-1	65 x 50 2 1/2 x 2	73 x 60.3 2.87 x 2.375	400 2.75	64 2.52	UL	FM
XGQT16S-65X25-2	65 x 25 2 1/2 x 1 1/4	76.1 x 33.7 2.996 x 1.327	400 2.75	64 2.52	UL	FM
XGQT16S-65X32-2	65 x 32 2 1/2 x 1 1/4	76.1 x 42.4 2.996 x 1.669	400 2.75	64 2.52	UL	FM
XGQT16S-65X40-2	65 x 40 2 1/2 x 1 1/2	76.1 x 48.3 2.996 x 1.669	400 2.75	64 2.52	UL	FM
XGQT16S-65X50-2	65 x 50 2 1/2 x 2	76.1 x 60.3 2.996 x 2.375	400 2.75	64 2.52	UL	FM
XGQT16S-80X25	80 x 25 3 x 1	88.9 x 33.7 3.500 x 1.327	400 2.75	64 2.52	UL	FM
XGQT16S-80X32	80 x 32 3 x 1 1/4	88.9 x 42.4 3.500 x 1.669	400 2.75	64 2.52	UL	FM
XGQT16S-80X40	80 x 40 3 x 1 1/2	88.9 x 48.3 3.500 x 1.900	400 2.75	64 2.52	UL	FM
XGQT16S-80X50	80 x 50 3 x 2	88.9 x 60.3 3.500 x 2.375	400 2.75	64 2.52	UL	FM
XGQT16S-80X65-1	80 x 65 3 x 1 1/2	88.9 x 73.0 3.500 x 2.875	400 2.75	64 2.52		
XGQT16S-80X65-2	80 x 65 3 x 1 1/2	88.9 x 76.1 3.500 x 3.000	400 2.75	64 2.52	UL	
XGQT16S-100X25	100 x 25 4 x 1	114.3 x 33.7 4.500 x 1.327	400 2.75	76 3.00	UL	FM
XGQT16S-100X32	100 x 32 4 x 1 1/4	114.3 x 42.4 4.500 x 1.669	400 2.75	76 3.00	UL	FM
XGQT16S-100X40	100 x 40 4 x 1 1/2	114.3 x 48.3 4.500 x 1.900	400 2.75	76 3.00	UL	FM
XGQT16S-100X50	100 x 50 4 x 2	114.3 x 60.3 4.500 x 2.375	400 2.75	76 3.00	UL	FM
XGQT16S-100X65-1	100 x 65 4 x 2 1/2	114.3 x 73.0 4.500 x 2.875	400 2.75	76 3.00		
XGQT16S-100X65-2	100 x 65 4 x 2 1/2	114.3 x 76.1 4.500 x 3.000	400 2.75	76 3.00	UL	FM
XGQT16S-100X80	100 x 80 4 x 3	114.3 x 88.9 4.500 x 3.500	400 2.75	76 3.00	UL	FM
XGQT16S-125X25	125 x 25 5 x 1	139.7 x 33.7 5.500 x 1.327	300 2.07	89 3.50	UL	FM
XGQT16S-125X32	125 x 32 5 x 1 1/4	139.7 x 42.4 5.500 x 1.669	300 2.07	89 3.50	UL	FM
XGQT16S-125X40	125 x 40 5 x 1 1/2	139.7 x 48.3 5.500 x 1.900	300 2.07	89 3.50	UL	FM
XGQT16S-125X50	125 x 50 5 x 2	139.7 x 60.3 5.500 x 2.375	300 2.07	89 3.50	UL	FM
XGQT16S-125X65	125 x 65 5 x 2 1/2	139.7 x 76.1 5.500 x 3.000	300 2.07	89 3.50	UL	FM
XGQT16S-125X80	125 x 80 5 x 3	139.7 x 88.9 5.500 x 3.500	300 2.07	89 3.50	UL	FM
XGQT16S-125X100	125 x 100 5 x 4	139.7 x 114.3 5.500 x 4.500	300 2.07	89 3.50		

Threaded Reducer Model: XGQT16S



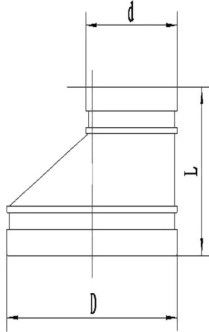
Technical Data

Part No.	Nominal Size mm/in	Pipe O.D. mm/in Dxd	Working Pressure PSI/MPa	Dimensions L mm/in	UL	FM
XGQT16S-125X25	125 x 25 5 x 1	141.3 x 33.7 5.563 x 1.327	300 2.07	89 3.50	UL	
XGQT16S-125X32	125 x 32 5 x 1 - 1/4	141.3 x 42.4 5.563 x 1.669	300 2.07	89 3.50	UL	
XGQT16S-125X50	125 x 50 5 x 2	141.3 x 60.3 5.563 x 2.375	300 2.07	89 3.50	UL	
XGQT16S-125X65	125 x 65 5 x 2 1/2	141.3 x 76.1 5.563 x 3.00	300 2.07	89 3.50	UL	
XGQT16S-150X25-1	150 x 25 6 x 1	165.1 x 33.7 6.500 x 1.327	300 2.07	102 4.02	UL	FM
XGQT16S-150X32-1	150 x 32 6 x 1 1/4	165.1 x 42.4 6.500 x 1.669	300 2.07	102 4.02	UL	FM
XGQT16S-150X40-1	150 x 40 6 x 1 1/2	165.1 x 48.3 6.500 x 1.900	300 2.07	102 4.02	UL	FM
XGQT16S-150X50-1	150 x 50 6 x 2	165.1 x 60.3 6.500 x 2.375	300 2.07	102 4.02	UL	FM
XGQT16S-150X65-1	150 x 65 6 x 2 1/2	165.1 x 76.1 6.500 x 3.000	300 2.07	102 4.02	UL	FM
XGQT16S-150X80-1	150 x 80 6 x 3	165.1 x 88.9 6.500 x 3.500	300 2.07	102 4.02	UL	FM
XGQT16S-150X100-1	150 x 100 6 x 4	165.1 x 114.3 6.500 x 4.500	300 2.07	102 4.02	UL	FM
XGQT16S-150X25-2	150 x 25 6 x 1	168.3 x 33.7 6.625 x 1.327	300 2.07	102 4.02	UL	FM
XGQT16S-150X32-2	150 x 32 6 x 1 1/4	168.3 x 42.4 6.625 x 1.669	300 2.07	102 4.02	UL	FM
XGQT16S-150X40-2	150 x 40 6 x 1 1/2	168.3 x 48.3 6.625 x 1.900	300 2.07	102 4.02	UL	FM
XGQT16S-150X50-2	150 x 50 6 x 2	168.3 x 60.3 6.625 x 2.375	300 2.07	102 4.02	UL	FM
XGQT16S-150X65-2	150 x 65 6 x 2 1/2	168.3 x 76.1 6.625 x 3.000	300 2.07	102 4.02	UL	FM
XGQT16S-150X80-2	150 x 80 6 x 3	168.3 x 88.9 6.625 x 3.500	300 2.07	102 4.02	UL	FM
XGQT16S-150X100-2	150 x 100 6 x 4	168.3 x 114.3 6.625 x 4.500	300 2.07	102 4.02	UL	FM
XGQT16S-200X32	200 x 32 8 x 1 1/4	219.1 x 42.4 8.625 x 1.669	300 2.07	127 5.00	UL	FM
XGQT16S-200X40	200 x 40 8 x 1 1/2	219.1 x 48.3 8.625 x 1.900	300 2.07	127 5.00	UL	FM
XGQT16S-200X50	200 x 50 8 x 2	219.1 x 60.3 8.625 x 2.375	300 2.07	127 5.00	UL	FM
XGQT16S-200X65	200 x 65 8 x 2 1/2	219.1 x 76.1 8.625 x 3.000	300 2.07	127 5.00	UL	FM
XGQT16S-200X80	200 x 80 8 x 3	219.1 x 88.9 8.625 x 3.500	300 2.07	127 5.00	UL	FM
XGQT16S-200X100	200 x 100 8 x 4	219.1 x 114.3 8.625 x 4.500	300 2.07	127 5.00	UL	FM

The specific items list shall be subject to the public notice of FM and UL website.

Grooved Eccentric Reducer

Model: XGQT17

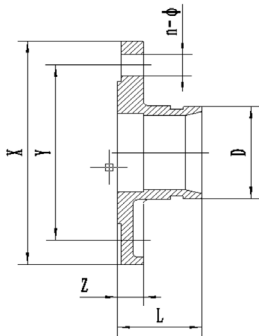


Technical Data

Part No.	Nominal Size mm/in	Pipe O.D. mm/in Dxd	Working Pressure PSI/MPa	Dimensions L mm/in	UL	FM
XGQT17-80X50	80 x 50 3 x 2	88.9 x 60.3 3.500 x 2.375	500 3.45	64 2.52	UL	FM
XGQT17-80X65-1	80 x 65 3 x 2 ½	88.9 x 73.0 3.500 x 2.875	500 3.45	64 2.52	UL	FM
XGQT17-80X65-2	80 x 65 3 x 2 ½	88.9 x 76.1 3.500 x 3.000	500 3.45	64 2.52	UL	FM
XGQT17-100X50	100 x 50 4 x 2	114.3 x 60.3 4.500 x 2.375	500 3.45	76 3.00	UL	FM
XGQT17-100X65-1	100 x 65 4 x 2 ½	114.3 x 73.0 4.500 x 2.875	500 3.45	76 3.00	UL	FM
XGQT17-100X65-2	100 x 65 4 x 2 ½	114.3 x 76.1 4.500 x 3.000	500 3.45	76 3.00	UL	FM
XGQT17-100X80	100 x 80 4 x 3	114.3 x 88.9 4.500 x 3.500	500 3.45	76 3.00	UL	FM
XGQT17-125X65	125 x 65 5 x 2 ½	139.7 x 76.1 5.500 x 3.000	500 3.45	89 3.50	UL	FM
XGQT17-125X80	125 x 80 5 x 3	139.7 x 88.9 5.500 x 3.500	500 3.45	89 3.50	UL	FM
XGQT17-125X100	125 x 100 5 x 4	139.7 x 114.3 5.500 x 4.500	500 3.45	89 3.50	UL	FM
XGQT17-150X50	150 x 50 6 x 2	159.0 x 60.3 6.250 x 2.375	500 3.45	102 4.02	UL	FM
XGQT17-150X65-1	150 x 65 6 x 2 ½	159.0 x 76.1 6.250 x 3.000	500 3.45	102 4.02	UL	FM
XGQT17-150X80-1	150 x 80 6 x 3	159.0 x 88.9 6.250 x 3.500	500 3.45	102 4.02	UL	FM
XGQT17-150X100-1	150 x 100 6 x 4	159.0 x 108.0 6.250 x 4.250	500 3.45	102 4.02	UL	FM
XGQT17-150X100-2	150 x 100 6 x 4	159.0 x 114.3 6.250 x 4.500	500 3.45	102 4.02	UL	FM
XGQT17-150X65-2	150 x 65 6 x 2 ½	165.1 x 76.1 6.500 x 3.000	500 3.45	102 4.02	UL	FM
XGQT17-150X80-2	150 x 80 6 x 3	165.1 x 88.9 6.500 x 3.500	500 3.45	102 4.02	UL	FM
XGQT17-150X100-3	150 x 100 6 x 4	165.1 x 114.3 6.500 x 4.500	500 3.45	102 4.02	UL	FM
XGQT17-150X125-1	150 x 125 6 x 5	165.1 x 139.7 6.500 x 5.500	500 3.45	102 4.02	UL	FM
XGQT17-150X80-3	150 x 80 6 x 3	168.3 x 88.9 6.625 x 3.500	500 3.45	102 4.02	UL	FM
XGQT17-150X100-4	150 x 100 6 x 4	168.3 x 114.3 6.625 x 4.500	500 3.45	102 4.02	UL	FM
XGQT17-150X125-2	150 x 125 6 x 5	168.3 x 139.7 6.625 x 5.500	500 3.45	102 4.02	UL	FM
XGQT17-200X80	200 x 80 8 x 3	219.1 x 88.9 8.625 x 3.500	500 3.45	127 5.00	UL	FM
XGQT17-200X100	200 x 100 8 x 4	219.1 x 114.3 8.625 x 4.500	500 3.45	127 5.00	UL	FM
XGQT17-200X125	200 x 125 8 x 5	219.1 x 139.7 8.625 x 5.500	500 3.45	127 5.00	UL	FM
XGQT17-200X150-1	200 x 150 8 x 6	219.1 x 165.1 8.625 x 6.500	500 3.45	127 5.00	UL	FM
XGQT17-200X150-2	200 x 150 8 x 6	219.1 x 168.3 8.625 x 6.625	500 3.45	127 5.00	UL	FM
XGQT17-250X150-1	250 x 150 10 x 6	273.0 x 165.1 10.75 x 6.500	500 3.45	152 5.98	UL	FM
XGQT17-250X150-2	250 x 150 10 x 6	273.0 x 168.3 10.75 x 6.625	500 3.45	152 5.98	UL	FM
XGQT17-250X200	250 x 200 10 x 8	273.0 x 219.1 10.75 x 8.625	500 3.45	152 5.98	UL	FM

The specific items list shall be subject to the public notice of FM and UL website.

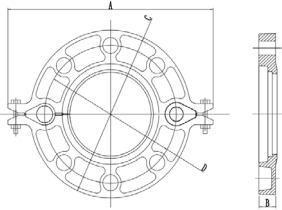
Flange Adaptor PN16 Model: XGQT18



Technical Data										
Part No.	Nominal Size mm/in	Pipe O.D mm/in Dxd	Working Pressure PSI/MPa	Dimensions mm/in				Bolt Size No. - Size mm	UL	FM
				L	X	Y	Z			
XGQT18-50	50 2	60.3 2.375	300 2.07	61 2.40	165 6.496	125 4.92	19 0.748	4 - M16	UL	FM
XGQT18-65-1	65 2 ½	73.0 2.875	300 2.07	61 2.40	185 7.283	145 5.70	19 0.748	4 - M16	UL	FM
XGQT18-65-2	65 2 ½	76.1 3.000	300 2.07	61 2.40	185 7.283	145 5.70	19 0.748	4 - M16	UL	FM
XGQT18-80	80 3	88.9 3.500	300 2.07	61 2.40	200 7.874	160 6.29	19 0.748	8 - M16	UL	FM
XGQT18-100-1	100 4	108.0 4.250	300 2.07	61 2.40	220 8.661	180 7.08	19 0.748	8 - M16	UL	FM
XGQT18-100-2	100 4	114.3 4.500	300 2.07	70 2.755	220 8.661	180 7.08	19 0.748	8 - M16	UL	FM
XGQT18-125-1	125 5	133.0 5.250	300 2.07	61 2.40	250 9.842	210 8.26	19 0.748	8 - M16	UL	FM
XGQT18-125-2	125 5	139.7 5.500	300 2.07	61 2.40	250 9.842	210 8.26	19 0.748	8 - M16	UL	FM
XGQT18-150-1	150 6	159.0 6.250	300 2.07	70 2.755	285 11.22	240 9.448	19 0.748	8 - M20	UL	FM
XGQT18-150-2	150 6	165.1 6.500	300 2.07	70 2.755	285 11.22	240 9.448	19 0.748	8 - M20	UL	FM
XGQT18-150-3	150 6	168.3 6.625	300 2.07	70 2.755	285 11.22	240 9.448	19 0.748	8 - M20	UL	FM
XGQT18-200	200 8	219.1 8.625	300 2.07	76 2.99	340 13.38	295 11.61	20 0.748	12 - M20	UL	FM
XGQT18-250	250 10	273.0 10.750	300 2.07	85 3.346	405 15.944	355 13.97	22 0.866	12 - M20	UL	FM
XGQT18-300	300 12	323.9 12.750	300 2.07	90 3.543	460 18.11	410 16.14	24.5 0.96	12 - M20	UL	FM
XGQT18-350	350 14	377.0 14.843	300 2.07	100 3.937	520 20.47	470 18.50	26 1.02	16 - M24		

The specific items list shall be subject to the public notice of FM and UL website.

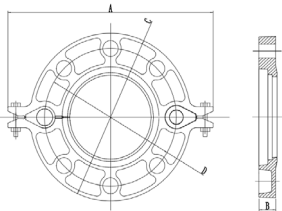
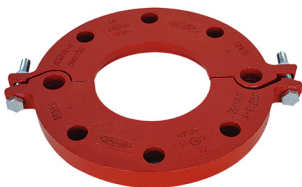
**Grooved Flange
PN16
Model: XGQT19**



Part No.	Nominal Size mm/in	Pipe O.D. mm/in	Working Pressure PSI/MPa	Dimensions mm/in				Bolt Size No. - Size mm	UL	FM
				A	B	C	D			
XGQT19-50	50 2	60.3 2.375	300 2.07	220 8.740	21 0.826	165 6.496	125 4.921	4 - M16	UL	FM
XGQT19-65-1	65 2 ½	73.0 2.875	300 2.07	240 9.448	21 0.826	185 7.283	145 5.708	4 - M16	UL	FM
XGQT19-65-2	65 2 ½	76.1 3.000	300 2.07	240 9.448	21 0.826	185 7.283	145 5.708	4 - M16	UL	FM
XGQT19-80	80 3	88.9 3.500	300 2.07	255 10.039	21 0.826	200 7.874	160 6.299	8 - M16	UL	FM
XGQT19-100	100 4	114.3 4.500	300 2.07	280 9.763	22 0.866	220 8.661	180 7.086	8 - M16	UL	FM
XGQT19-125-1	125 5	139.7 5.500	300 2.07	316 12.44	22 0.866	250 9.842	210 8.267	8 - M16	UL	FM
XGQT19-125-2	125 5	141.3 5.563	300 2.07	324 12.44	22 0.866	250 9.842	210 8.267	8 - M16	UL	FM
XGQT19-150-1	150 6	165.1 6.500	300 2.07	346 13.622	22 0.866	285 11.22	240 9.448	8 - M20	UL	FM
XGQT19-150-2	150 6	168.3 6.625	300 2.07	346 13.622	22 0.866	285 11.22	240 9.448	8 - M20	UL	FM
XGQT19-200	200 8	219.1 8.625	300 2.07	410 16.456	26 1.023	340 13.38	295 11.614	12 - M20	UL	FM
XGQT19-250	250 10	273 8.625	300 2.07	500 19.685	27 1.063	405 15.945	355 13.976	12 - M20	UL	FM

The specific items list shall be subject to the public notice of FM and UL website.

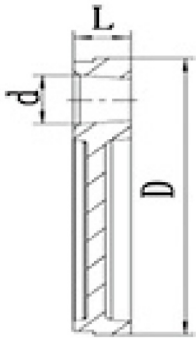
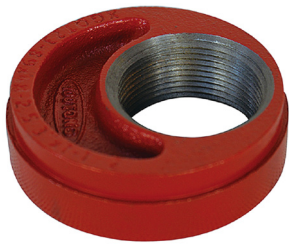
**Grooved Flange
ANSI - Class 150
Model: XGQT29**



Part No.	Nominal Size mm/in	Pipe O.D. mm/in	Working Pressure PSI/MPa	Dimensions mm/in				Bolt Size No. - Size mm	UL	FM
				A	B	C	D			
XGQT29-50	50 2	60.3 2.375	300 2.07	206 8.110	22 0.866	152 5.984	121 4.763	4 - M16	UL	FM
XGQT29-65	65 2 ½	73.0 2.875	300 2.07	230 9.055	22 0.866	178 7.007	140 5.511	4 - M16	UL	FM
XGQT29-80	80 3	88.9 3.500	300 2.07	242 9.527	24 0.944	191 7.519	152 5.984	4 - M16	UL	FM
XGQT29-100	100 4	114.3 4.500	300 2.07	280 11.023	24 0.944	229 9.015	191 7.519	8 - M16	UL	FM
XGQT29-125-1	125 5	139.7 5.500	300 2.07	325 12.795	24.5 0.964	254 10	216 8.503	8 - M20		
XGQT29-125-2	125 5	141.3 5.563	300 2.07	325 12.795	24.5 0.964	254 10	216 8.503	8 - M20	UL	FM
XGQT29-150	150 6	168.3 6.625	300 2.07	345 13.583	24.5 0.964	282 11.102	241.5 9.508	8 - M20	UL	FM
XGQT29-200	200 8	219.1 8.625	300 2.07	414.3 16.311	28 1.102	341.4 13.44	298.5 11.751	8 - M20	UL	FM
XGQT29-250	250 10	273.0 10.75	150 1.04	500 19.685	30 1.181	405 15.945	362 14.252	12 - M24	UL	FM

The specific items list shall be subject to the public notice of FM and UL website.

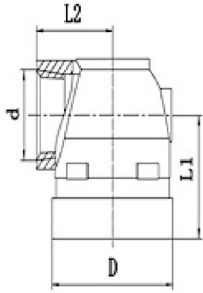
Drain Cap Model: XGQT23



Technical Data						
Part No.	Nominal Size mm/in	Pipe O.D. mm/in Dxd	Working Pressure PSI/MPa	Dimensions L mm/in	UL	FM
XGQT23-40X25	40 x 25 1 ½ x 1	48.3 x 33.7 1.901 x 1.327	500 3.45	24.5 0.96		
XGQT23-50X25	50 x 25 2 x 1	60.3 x 33.7 2.375 x 1.327	500 3.45	24.5 0.96	UL	FM
XGQT23-50X40	50 x 40 2 x 1 ½	60.3 x 48.3 2.375 x 1.900	500 3.45	24.5 0.96	UL	FM
XGQT23-65X25	65 x 25 2 ½ x 1	73.0 x 33.7 2.875 x 1.327	500 3.45	24.5 0.96	UL	FM
XGQT23-65X40	65 x 40 2 ½ x 1 ½	76.1 x 48.3 3.000 x 1.900	500 3.45	24.5 0.96	UL	FM
XGQT23-65X50	65 x 50 2 ½ x 2	76.1 x 60.3 3.000 x 2.375	500 3.45	24.5 0.96	UL	FM
XGQT23-80X25	80 x 25 3 x 1	88.9 x 33.7 3.500 x 1.327	500 3.45	24.5 0.96	UL	FM
XGQT23-80X40	80 x 40 3 x 1 ½	88.9 x 48.3 3.500 x 1.900	500 3.45	24.5 0.96	UL	FM
XGQT23-80X50	80 x 50 3 x 2	88.9 x 60.3 3.500 x 2.375	500 3.45	24.5 0.96	UL	FM
XGQT23-100X25	100 x 25 4 x 1	114.3 x 33.7 4.500 x 1.327	500 3.45	25 0.99	UL	FM
XGQT23-100X40	100 x 40 4 x 1 ½	114.3 x 48.3 4.500 x 1.902	500 3.45	25 0.99	UL	FM
XGQT23-100X50	100 x 50 4 x 2	114.3 x 60.3 4.500 x 2.375	500 3.45	25 0.99	UL	FM
XGQT23-125X50	125 x 50 5 x 2	139.7 x 60.3 5.500 x 2.375	500 3.45	25 0.99	UL	FM
XGQT23-150X25	150 x 25 6 x 1	168.3 x 33.7 6.625 x 1.327	500 3.45	25 0.99	UL	FM
XGQT23-150X40	150 x 40 6 x 1 ½	168.3 x 48.3 6.625 x 1.900	500 3.45	25 0.99		
XGQT23-150X50	150 x 50 6 x 2	168.3 x 60.3 6.625 x 2.375	500 3.45	25 0.99	UL	FM
XGQT23-200X50	200 x 50 8 x 2	219.1 x 60.3 8.625 x 2.375	500 3.45	30 1.81	UL	FM

The specific items list shall be subject to the public notice of FM and UL website.

Adapter Elbow Model: 22

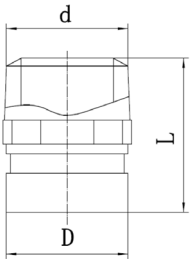


Technical Data

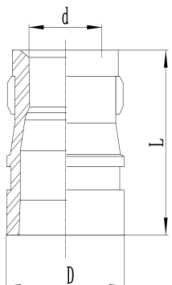
Part No.	Nominal Size mm/in	Pipe O.D. mm/in Dxd	Working Pressure PSI/MPa	Dimensions mm/in		UL	FM
				L1	L2		
22-32X15	32 x 15 1 ¼ x ½	42.4 x 21.3 1.669 x 0.839	500 3.45	45 1.77	30.5 1.20	UL	FM
22-32X20	32 x 20 1 ¼ x ¾	42.4 x 26.9 1.669 x 1.059	500 3.45	45 1.77	30.5 1.20	UL	FM
22-32X25	32 x 25 1 ¼ x 1	42.4 x 33.7 1.669 x 1.327	500 3.45	48.5 1.91	31.5 1.24	UL	FM
22-40X15	40 x 15 1 ½ x ½	48.3 x 21.3 1.900 x 0.839	500 3.45	45 1.77	33.5 1.32	UL	FM
22-40X20	40 x 20 1 ½ x ¾	48.3 x 26.9 1.900 x 1.059	500 3.45	45 1.77	33.5 1.32	UL	FM
22-40X25	40 x 25 1 ½ x 1	48.3 x 33.7 1.900 x 1.327	500 3.45	48.5 1.91	35.5 1.32	UL	FM
22-50X15	50 x 15 2 x ½	60.3 x 21.3 2.375 x 0.839	500 3.45	44.5 1.75	40 1.57	UL	FM
22-50X20	50 x 20 2 x ¾	60.3 x 26.9 2.375 x 1.059	500 3.45	45 1.77	40 1.57	UL	FM
22-50X25	50 x 25 2 x 1	60.3 x 33.7 2.375 x 1.327	500 3.45	48.5 1.91	41.5 1.63	UL	FM
22-65X15	65 x 15 2 ½ x ½	73 x 21.3 2.87 x 0.839	500 3.45	44.5 1.75	44.5 1.75	UL	FM
22-65X20	65 x 20 2 ½ x ¾	73 x 26.9 2.87 x 1.059	500 3.45	44.5 1.75	44.5 1.75	UL	FM
22-65X25	65 x 25 2 ½ x 1	73 x 33.7 2.87 x 1.327	500 3.45	48.5 1.91	46 1.81	UL	FM

The specific items list shall be subject to the public notice of FM and UL website.

Adapter Nipple Model: 36



Reducing Adapter Nipple Model: 37



rhinotek

DESIGNED, INNOVATED &
ENGINEERED IN AUSTRALIA

Technical Data

Part No.	Nominal Size mm/in	Pipe O.D. mm/in Dxd	Working Pressure PSI/MPa	Dimensions L mm/in	UL	FM
36-40X40	40 x 40 1 ½ x 1 ½	48.3 x 48.3 1.900 x 1.900	500 3.45	63 2.48	UL	FM
36-50X50	50 x 50 2 x 2	60.3 x 60.3 2.375 x 2.375	500 3.45	63 2.48	UL	FM
36-50X40	50 x 40 2 x 1 ½	60.3 x 48.3 2.375 x 1.900	500 3.45	63 2.48		
36-65X65	65 x 65 2 ½ x 2 ½	73 x 76.1 2.875 x 3.000	500 3.45	102 4.02		

The specific items list shall be subject to the public notice of FM and UL website.

Technical Data

Part No.	Nominal Size mm/in	Pipe O.D. mm/in Dxd	Working Pressure PSI/MPa	Dimensions L mm/in	UL	FM
37-40X25	40 x 25 1 ½ x 1	48.3 x 33.7 1.900 x 1.327	500 3.45	63 2.48	UL	FM
37-50X40	50 x 40 2 x 1 ½	60.3 x 48.3 2.375 x 1.900	500 3.45	63 2.48	UL	FM

The specific items list shall be subject to the public notice of FM and UL website.

Flange Adaptor ANSI-Class 150 Model: XGQT28

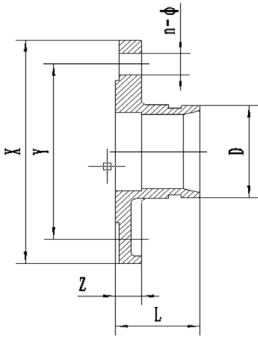
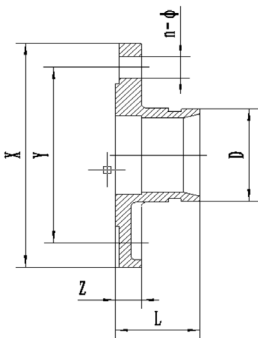


Table E Flange Adaptor Model: XGQT38



rhinotek

DESIGNED, INNOVATED &
ENGINEERED IN AUSTRALIA

Technical Data

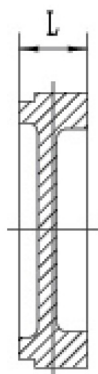
Part No.	Nominal Size mm/in	Pipe O.D. mm/in D	Working Pressure PSI/MPa	Dimensions mm/in				Bolt Size No. - Size mm	UL	FM
				L	X	Y	Z			
XGQT28-50	50 2	60.3 2.375	300 2.07	65 2.56	152 5.98	120.5 4.744	16 0.629	4 - M16	UL	FM
XGQT28-65	65 2 ½	73.0 2.875	300 2.07	65 2.56	178 7.00	139.5 5.693	17.5 0.688	4 - M16	UL	FM
XGQT28-80	80 3	88.9 3.500	300 2.07	65 2.56	190 7.48	152.5 6.00	19 0.748	4 - M16	UL	FM
XGQT28-100	100 4	114.3 4.500	300 2.07	70 2.755	229 9.015	190.5 7.5	24 0.96	8 - M16	UL	FM
XGQT28-125	125 5	141.3 5.562	300 2.07	70 2.755	254 10	216 8.503	24 0.96	8 - M20	UL	FM
XGQT28-150	150 6	168.3 6.625	300 2.07	70 2.755	279 10.98	241.5 9.507	25.5 1.10	8 - M20	UL	FM
XGQT28-200	200 8	219.1 8.625	300 2.07	82 3.228	343 13.50	298.5 11.751	28.5 1.112	8 - M20	UL	FM
XGQT28-250	250 10	273.0 10.750	300 2.07	85 3.346	406 15.98	362 14.251	30 1.181	12 - M24	UL	FM
XGQT28-300	300 12	323.9 12.750	300 2.07	90 3.543	483 19.01	432 17.00	32 1.259	12 - M24	UL	FM

The specific items list shall be subject to the public notice of FM and UL website.

Technical Data

Part No.	Nominal Size mm/in	Pipe O.D. mm/in D	Working Pressure PSI/MPa	Dimensions mm/in				Bolt Size No. - Size mm	UL	FM
				L	X	Y	Z			
XGQT38-50	50 2	60.3 2.375	365 2.52	65 2.56	152 5.98	114 4.488	13 0.512	4 - M16	UL	FM
XGQT38-65	65 3 OD	76.1 2.996	365 2.52	70 2.755	166.5 6.56	128.5 5.059	13 0.512	4 - M16	UL	FM
XGQT38-80	80 3	88.9 3.500	365 2.52	70 2.755	186 7.32	146 5.748	15 0.591	4 - M16	UL	FM
XGQT38-100	100 4	114.3 4.500	365 2.52	70 2.755	216 8.504	179.5 7.063	17.5 0.689	8 - M16	UL	FM
XGQT38-150	150 6 - ½ OD	165.1 6.500	365 2.52	70 2.755	280 11.02	236.5 9.307	20 0.787	8 - M20	UL	FM
XGQT38-200	200 8	219.1 8.625	365 2.52	100 3.98	337 13.27	292 11.496	21 0.827	8 - M20	UL	FM

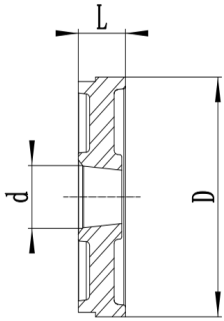
Cap
Model: XGQT20



Technical Data						
Part No.	Nominal Size mm/in	Pipe O.D. Dxd mm/in	Working Pressure PSI/MPa	Dimensions L mm/in	UL	FM
XGQT20-25	25 1	33.7 1.315	400 2.75	24.5 0.96	UL	FM
XGQT20-32	32 1 ¼	42.4 1.660	400 2.75	24.5 0.96	UL	FM
XGQT20-40	40 1 ½	48.3 1.900	400 2.75	24.5 0.96	UL	FM
XGQT20-50	50 2	60.3 2.375	400 2.75	24.5 0.96	UL	FM
XGQT20-65-1	65 2 ½	73.0 2.875	400 2.75	24.5 0.96	UL	FM
XGQT20-65-2	65 2 ½	76.1 3.000	400 2.75	24.5 0.96	UL	FM
XGQT20-80	80 3	88.9 3.500	400 2.75	24.5 0.96	UL	FM
XGQT20-100-1	100 4	108.0 4.252	400 2.75	25 0.99	UL	FM
XGQT20-100-2	100 4	114.3 4.500	300 2.07	25 0.99	UL	FM
XGQT20-125-1	125 5	133.0 5.250	300 2.07	25 0.99	UL	FM
XGQT20-125-2	125 5	139.7 5.500	300 2.07	25 0.99	UL	FM
XGQT20-150-1	150 6	159.0 6.260	300 2.07	25 0.99	UL	FM
XGQT20-150-2	150 6	165.1 6.500	300 2.07	25 0.99	UL	FM
XGQT20-150-3	150 6	168.3 6.625	300 2.07	25 0.99	UL	FM
XGQT20-200	200 8	219.1 8.625	300 2.07	30 1.81	UL	FM
XGQT20-250	250 10	273.0 10.750	300 2.07	32 1.259	UL	FM

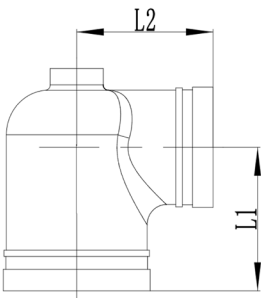
The specific items list shall be subject to the public notice of FM and UL website.

Threaded Cap Model: XGQT20S



Technical Data						
Part No.	Nominal Size mm/in	Pipe O.D. Dxd mm/in	Working Pressure PSI/MPa	Dimensions L mm/in	UL	FM
XGQT20S-100X25	100 x 25 4 x 1	114.3 x 33.7 4.500 x 1.327	500 3.45	25 0.99	UL	FM
XGQT20S-150X25-1	150 x 25 6 x 1	165.1 x 33.7 6.500 x 1.327	500 3.45	25 0.99	UL	FM
XGQT20S-150X25-2	150 x 25 6 x 1	168.3 x 33.7 6.625 x 1.327	500 3.45	25 0.99	UL	FM
XGQT20S-200X25	200 x 25 8 x 1	219.1 x 33.7 8.625 x 1.327	500 3.45	30 1.18	UL	FM
XGQT20S-250X25	250 x 25 10 x 1	273 x 33.7 10.750 x 1.327	500 3.45	32 1.259	UL	FM

Hydrant Elbow Model: XGQT21



Technical Data							
Part No.	Nominal Size mm/in	Pipe O.D. mm/in Dxd	Working Pressure PSI/MPa	L1	L2	UL	FM
XGQT21-100X80	100 x 80 4 x 3	114.3 x 88.9 4.500 x 3.500	300 2.07	106 4.173	106 4.173	UL	FM
XGQT21-150X80	150 x 80 6 x 3	165.1 x 88.9 6.500 x 3.500	300 2.07	130.5 5.138	130.5 5.138		FM

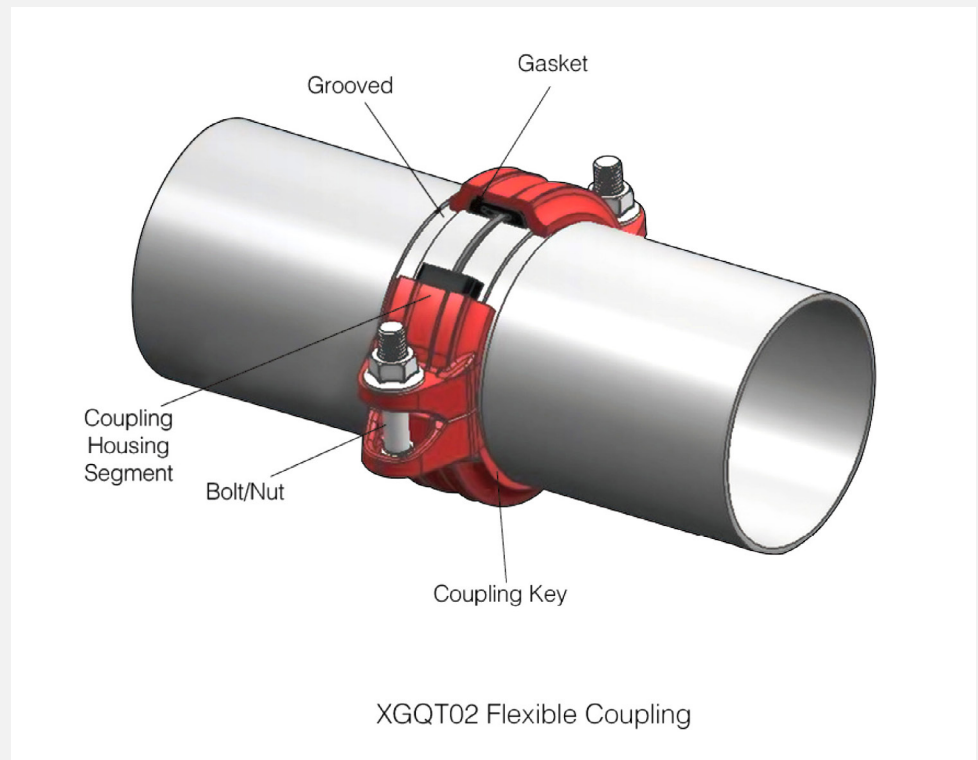
rhinotek 

DESIGNED, INNOVATED &
ENGINEERED IN AUSTRALIA

Rigid & Flexible Couplings

Grooved mechanical couplings (GMC) are available in both rigid and flexible models. A rigid coupling is used in applications where a rigid joint is desired.similar to that of a traditional flanged, welded ,or threaded connection. To be considered rigid, a coupling would allow less than one degree of deflection or angular movement.

Flexible couplings are designed to accommodate axial displacement, rotation and a minimum one degree of angular movement. Flexible couplings are used in applications that call for curved or deflected layouts or when systems are exposed to outside forces beyond normal static conditions. such as seismic events or where vibration or noise attenuation are a concern.



Grooved couplings become less flexible as the pipe size increases. For sizes in excess of 18"(450mm) couplings are very limited in their angular movement.

Coupling Installation Instructions

Installation

Step 1. Before installation, whether the groove meet the standard should be checked and then wipe away the burrs, iron rust, greasy dirt on gasket ring and pipe.

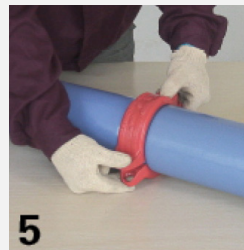
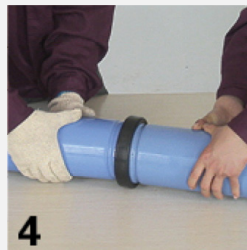
Step 2. Spread a non-petronleun base, non-toxic lubricant to gasket ring outside and inside.

Step 3. Slip gasket over pipe/fitting end. The lip of the gasket can not overhang the pipe/fitting ends.

Step 4. Secure another grooved steel pipe to this one and cover the gasket ring on pipe end, making sure the gasket ring is at the sealing position of both pipes. The gasket should not be twisted.

Step 5. Make sure coupling has fixed the pipes.

Step 6. Tighten the nuts evenly by alternating sides until the specified torque value are achieved. For rigid coupling, keep the gaps at bolts pads evenly spaced. Gaskets can't be seen visually. For flexible coupling, two housings should be iron to iron connected. Gaskets can't be seen visually. For angle pad coupling, tighten the nuts evenly until an iron to iron contact is achieved. Equal and positive or neutral offsets shall be present at each bolt pad location.



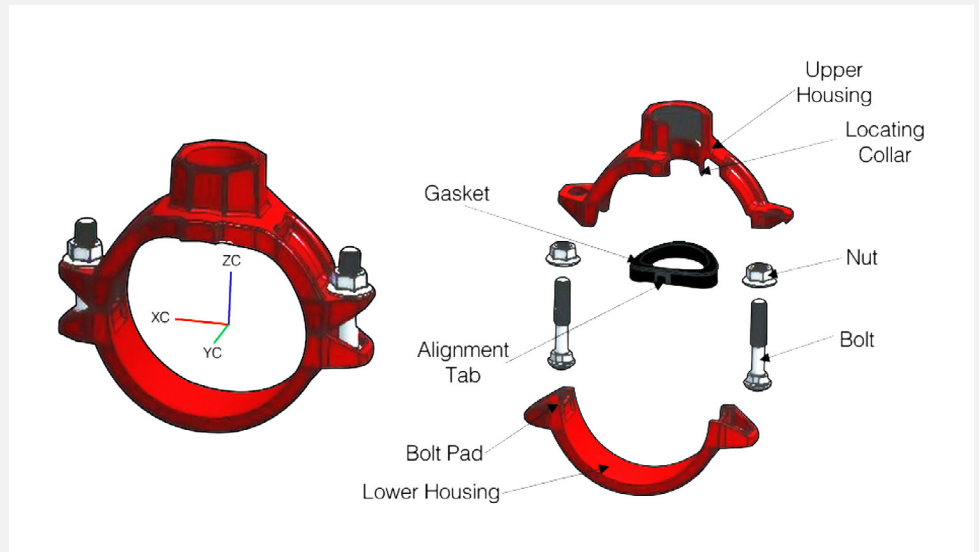
Required Assembly Torques		
Bolt Size	Required Torque	
Inch	N.M	Lbs-Ft.
3/8	40-60	30-45
1/2	110-135	80-100
5/8	135-175	100-130
3/4	175-245	130-180
7/8	245-325	180-240

WARNING

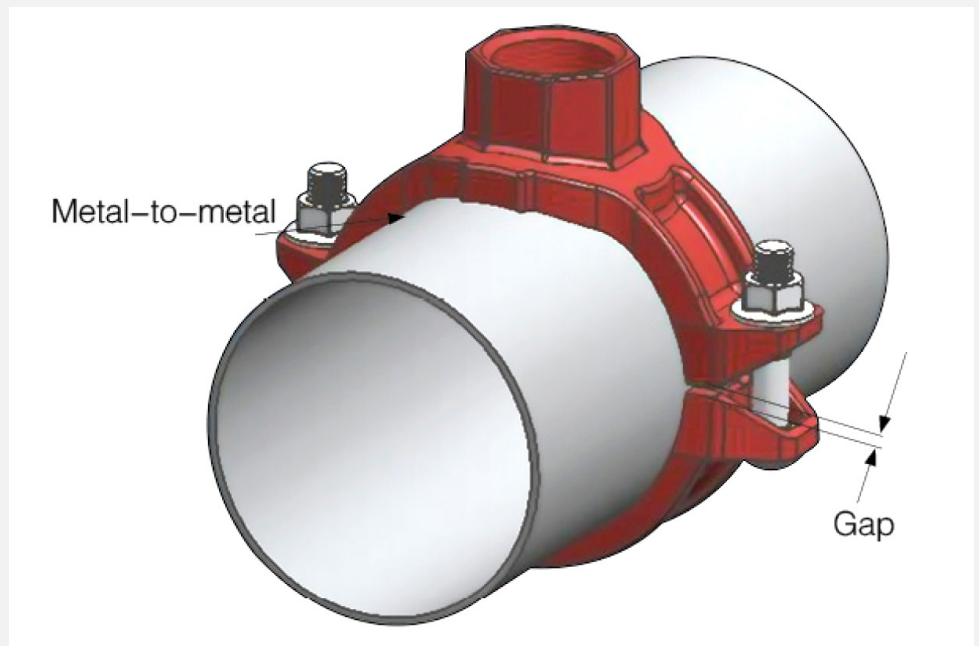
1. It is important to tighten the nuts evenly by alternating sides to prevent gasket pinching.
2. Proper torquing of bolts is required to obtain specified performance. Over torquing may result bolts or cast broken. Pipe joint separation may result in significant property damage and serious injury!
3. Read and understand all instructions before attempting to install any piping products.
4. Depressurize and drain the piping system before attempting to install, remove, or adjust any piping products.
5. Wear safety glasses, helmet, and foot protection during installation.
6. Failure to follow these instructions could result in serious personal injury, improper product installation, and/or property damage.

Mechanical Tees

Mechanical tees provide a fast and easy mid-point branch outlet, eliminating the need for welding or the use of multiple fittings.



When bolts are tightened with a proper torque, the outlet housing makes metal to metal contact with the outer surface of the pipe.



It is normal to see bolt pad gaps, though they should be equal on both sides of the mechanical tee.

Mechanical Tee Installation Instructions

Installation

Step 1. Make sure the correct hole saw size is being used. Holes must be drilled on the centerline but not on the weld line of the pipe. Ensure that a 5/8inch/16mm area around the hole is clean, wipe away the burrs, iron rust, greasy dirt.

Step 2. Inspect the sealing surface of the gasket to make sure no debris is present. Lubricate the exposed sealing surface of the gasket.

Step 3. Put gasket seal in the Mechanical Tee making sure the tab in the gasket line up with the tab recesses in the house.

Step 4. Install the Mechanical Tee in the hole.

Step 5. Install the bottom piece and make sure the locating collar engages the outlet hole properly. Check this engagement by rocking the upper (outlet) housing in the hole.

Step 6. Tighten the nuts evenly by alternating sides until the specified torque value are achieved.



Required Assembly Torques

Bolt Size	Required Torque		
	Inch	N.M	Lbs-Ft.
3/8		40-60	30-45
1/2		110-135	80-100
5/8		135-175	100-130
3/4		175-245	130-180
7/8		245-325	180-240

WARNING

1. It is important to tighten the nuts evenly by alternating sides to prevent gasket pinching.
2. To achieve optimal performance, it is necessary to reach the rated bolt torque. After installation, a gap of 2-5mm between the upper and lower pieces is normal. The gaps on both sides should be uniform. Excessive torque can damage the castings and bolts, causing the pipe connection to fall off, resulting in significant property damage and serious personal injury.
3. Read and understand all instructions before attempting to install any piping products.
4. Depressurize and drain the piping system before attempting to install, remove, or adjust any piping products.
5. Wear safety glasses, helmet, and foot protection during installation.
6. Failure to follow these instructions could result in serious personal injury, improper product installation, and/or property damage.

101T Push Lock Coupling Installation Instructions

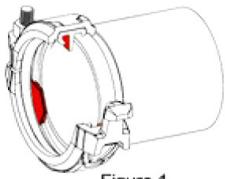


Figure 1



Figure 2

Installation

Step 1. Inspect exterior groove and ends of the pipe to verify all burrs, loose debris, dirt, chips, paint and any other foreign material such as grease are removed. Pipe end sealing surfaces must be free from sharp edges, projections, indentations, and/or other defects.

Note* A silicone based lubricant is recommended. To prevent deterioration of the gasket material a petroleum lubricant should not be used on Grade "A" "EPDM".

Step 2. Do not remove the nut from the bolt. Open the coupling by extending the coupling segments out to the extent allowed by the bolt and nut.

Step 3. As shown in the picture, apply lubricant evenly around the rubber ring exposed on the shell. The surface of the rubber ring at the groove shown in Figure 2 should also be evenly coated with lubricant.

Step 4. Push the gasket/coupling onto one end of the pipe until the positioning-plate of the gasket is in contact with the end of the pipe (See Figure 1: red highlights is positioning-plate). The pipe end should not cross through the positioning-plate of gasket. (See Figure 2).

Step 5. Slide the other pipe end into the gasket/coupling ensuring that it makes contact with the positioning-plate of the gasket. Both pipes should be aligned vertically and horizontally. Verify that the housing is over the gasket and that the housing keys are aligned with the pipe grooves.

Step 6. Tighten nut to the recommended bolt torque, see sheet 1. Visually inspect the coupling to ensure that the housing keys are engaged into the pipe grooves.

Note* Bolt-torque information is supplied as a guideline in sheet 1 and may be used when setting the torque on power impact wrenches. Refer to the manufacturer's instructions for settings. Bolt lengths require the use of deep or extra-deep-well sockets.

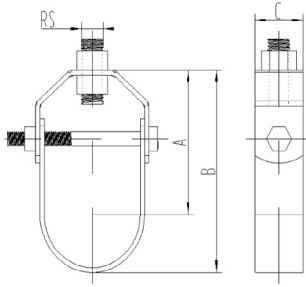


Caution

Removal of the nut from the bolt may result in the coupling segments separating at the hinges and the coupling disengaging from the pipe. Use caution to avoid equipment damage and/or personal injury.

Do not leave coupling unattended on a single pipe end as it may disengage from the pipe. Failure to do so may result in equipment damage and/or personal injury.

Clevis Hanger Model: CHI

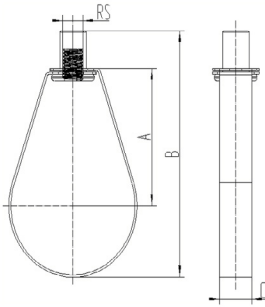


Technical Features

Size Range	1/2" through 12"
Material	Carbon Steel
Finish	Galvanized. Other finish available upon request.
Service	Recommended for the suspension of stationary pipe lines.
Approvals	Complies with Federal Specification A-A-1192A (Type 1), WW-H-171-E (Type 1), and MSS SP-58 (Type 1).
Ordering	Specify pipe size, figure number and name.

Technical Data									
Part No.	Nominal Pipe Size mm/in	Pipe O.D. mm/in	RS mm/in	Dimensions mm/in			Max. Rec lbs/N	UL	FM
				A	B	C			
CHI-21	DN15 1/2	21.3 0.838	M10 3/8	41 1 5/8	55 2 1/6	22 7/8	610 2710	UL	
CHI-26	DN20 3/4	26.7 1.051		44 1 3/4	60 2 3/8			UL	FM
CHI-33	DN25 1	33.7 1.327		50 2	70 2 3/4		730 3240	UL	FM
CHI-42	DN32 1 1/4	42.4 1.669		61 2 3/8	85 3 5/16			UL	FM
CHI-48	DN40 1 1/2	48.3 1.900		73 2 7/8	100 3 5/16			UL	FM
CHI-60	DN50 2	60.3 2.245		82 3 1/4	115 4 1/2			UL	FM
CHI-73	DN65 2 1/2	73 2.375	M12 1/2	95 3 3/4	135 5 1/3	30 1 3/16	1350 6000	UL	FM
CHI-89	DN80 3	88.9 3.000		105 4 1/8	155 6 1/8			UL	FM
CHI-114	DN100 4	114.3 4.500	M16 5/8	140 5 1/2	200 7 7/8	40 1 9/16	1430 6360	UL	FM
CHI-141	DN125 5	141.3 5.563		175 6 7/8	250 10			UL	FM
CHI-168	DN150 6	168.3 6.625	M20 3/4	190 7 1/2	280 11		50 2	1940 8630	UL
CHI-219	DN200 8	219.1 8.625		215 8 1/2	330 13	3600 16000		UL	FM
CHI-273	DN250 10	273 10.748		255 10	400 15 3/4			UL	FM
CHI-324	DN300 12	323.9 12.752		300 11 3/4	470 18 1/2			3800 16900	UL

Ring Hanger Model: RH1



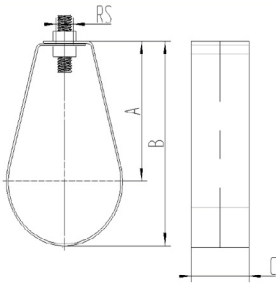
Technical Features

Size Range	1/2" through 8"
Material	Carbon Steel
Finish	Galvanized. Other finish available upon request.
Service	Recommended for suspension of non-insulated stationary pipe line. Manufactured to use the min. rod size permitted by NFPA for fire sprinkler pipe line.
Approvals	Complies with Federal Specification A-A-1192A (Type 10), WW-H-171-E (Type 10), and MSS SP-69 (Type 10).
Ordering	Specify part number.

Technical Data

Part No.	Nominal Pipe Size mm/in	Pipe O.D. mm/in	RS mm/in	Dimensions mm/in			Max. Rec lbs/N	UL	FM
				A	B	C			
RH1-21	DN15 1/2	21.3 0.838	M10 3/8	40 1 1/2	70 2 3/4	16 5/8	500 2220	UL	
RH1-26	DN20 3/4	26.7 1.051		45 1 3/4	78 3 1/16			UL	FM
RH1-33	DN25 1	33.7 1.327		48 1 7/8	84 3 5/16			UL	FM
RH1-42	DN32 1 1/4	42.4 1.669		50 2	90 3 9/16			UL	FM
RH1-48	DN40 1 1/2	48.3 1.900		55 2 3/16	98 3 7/8			UL	FM
RH1-60	DN50 2	60.3 2.245		60 2 3/8	109 4 1/4			UL	FM
RH1-73	DN65 2 1/2	73 2.375		78 3 1/16	132 5 3/16	20 13/16	1000 4440	UL	FM
RH1-89	DN80 3	88.9 3.000		82 3 1/4	145 5 11/16			UL	FM
RH1-114	DN100 4	114.3 4.500		100 4	175 6 7/8			UL	FM
RH1-141	DN125 5	141.3 5.563		116 4 5/8	210 8 1/4			1900 8450	UL
RH1-168	DN150 6	168.3 6.625	M12 1/2	135 5 5/16	245 9 5/8	UL	FM		
RH1-219	DN200 8	219.1 8.625		183 7 1/4	315 12 3/8	UL	FM		

Pear Hanger Model: PH1



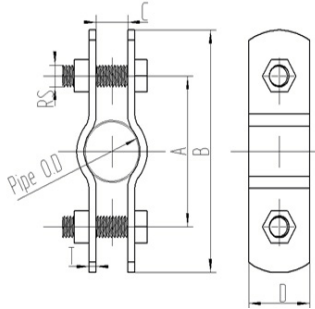
Technical Features

Size Range	1/2" through 8"
Material	Carbon Steel
Finish	Galvanized. Other finish available upon request.
Service	Recommended for suspension of non-insulated stationary pipe line. Manufactured to use the min. rod size permitted by NFPA for fire sprinkler pipe line.
Approvals	Complies with Federal Specification A-A-1192A (Type 10), WW-H-171-E (Type 10), and MSS SP-69 (Type 10).
Ordering	Specify part number.

Technical Data

Part No.	Nominal Pipe Size mm/in	Pipe O.D. mm/in	RS mm/in	Dimensions mm/in			Max. Rec lbs/N	UL	FM
				A	B	C			
PH1-21	DN15 1/2	21.3 0.838	M10 3/8	64 2 1/2	77 3 1/16	25 1	500 2220	UL	
PH1-26	DN20 3/4	26.7 1.051		64 2 1/2	80 3 1/8			UL	FM
PH1-33	DN25 1	33.7 1.327		70 2 3/4	90 3 9/16			UL	FM
PH1-42	DN32 1 1/4	42.4 1.669		73 2 7/8	97 3 13/16			UL	FM
PH1-48	DN40 1 1/2	48.3 1.900		75 2 15/16	101.5 4			UL	FM
PH1-60	DN50 2	60.3 2.245		80 3 1/8	112.5 4 1/2			UL	FM
PH1-73	DN65 2 1/2	73 2.375	M12 1/2	91 3 9/16	130 5 1/8	32 1 1/4	1000 4400	UL	FM
PH1-89	DN80 3	88.9 3.000		105 4 1/8	152 6			UL	FM
PH1-114	DN100 4	114.3 4.500		115 4 1/2	175 6 7/8			UL	FM
PH1-141	DN125 5	141.3 5.563		175 6 7/8	249 9 7/8			UL	FM
PH1-168	DN150 6	168.3 6.625	M16 5/8	222 8 3/4	310 12 1/4	40 1 1/2	1260 5544	UL	FM
PH1-219	DN200 8	219.1 8.625		250 9 13/16	363 14 1/4			UL	FM

**Medium Pipe
Clamp
Model: PC1**

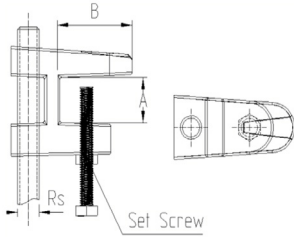


Technical Features

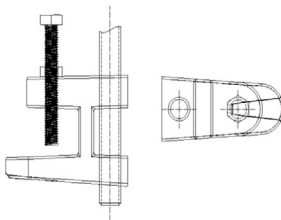
- Size Range** 1/2" through 8"
- Material** Carbon Steel
- Finish** Plain, Hot-Dip Galvanized with Zinc Plated Bolts & Nuts, Epoxy Coated or Painted.
- Service** This product is not intended for use with hanger rods.
- Approvals** Complies with Federal Specification A-A-1192A (Type 10), WW-H-171-E (Type 10), and MSS SP-69 (Type 10).
- Ordering** Specify part number.

Technical Data										
Part No.	Nominal Pipe Size mm/in	Pipe O.D. mm/in	RS mm/in	Dimensions mm/in				Max. Rec lbs/N	UL	FM
				A	B	C	C			
PC1-21	DN15 1/2	21.3 0.838	M10 3/8	56 2 1/4	86 3 3/8	12 1/2	25 1	500 2220	UL	
PC1-26	DN20 3/4	26.7 1.051		65 2 1/2	95 3 3/4				UL	FM
PC1-33	DN25 1	33.7 1.327		70 2 3/4	100 4				UL	FM
PC1-42	DN32 1 1/4	42.4 1.669		80 3 1/8	110 4 5/16				UL	FM
PC1-48	DN40 1 1/2	48.3 1.900		90 3 1/2	120 4 3/4				UL	FM
PC1-60	DN50 2	60.3 2.245	M12 1/2	105 4 1/8	140 5 1/2	16 5/8	40 1 9/16	1000 4400	UL	FM
PC1-73	DN65 2 1/2	73 2.375		135 5 5/16	170 6 3/4				UL	FM
PC1-89	DN80 3	88.9 3.000		145 5 11/16	180 7 1/8				UL	FM
PC1-114	DN100 4	114.3 4.500		180 7 1/8	215 8 1/2				UL	FM
PC1-141	DN125 5	141.3 5.563		210 8 1/4	250 9 7/8				UL	FM
PC1-168	DN150 6	168.3 6.625	M16 5/8	250 9 7/8	290 11 1/2	18 3/4	50 2	1260 5544	UL	FM
PC1-219	DN200 8	219.1 8.625		305 12	350 13 3/4				UL	FM
PC1-273	DN250 10	273 10.75		365 14 3/8	435 17 1/8				UL	FM
PC1-324	DN300 12	323.9 12.75		415 16 3/8	485 19 1/8				UL	FM

Universal C Type Clamp Model: TC1



TOP



BOTTOM



Technical Features

Size Range	3/8", 1/2", 5/8" and 3/4" or M10, M12, M16 and M20
Material	Ductile iron clamp, hardened steel cup point set screw and lock nut.
Finish	Black or Galvanized.
Service	Structural attachment to top or bottom of metal beams, purlins, channel or angel iron.
Approvals	Complies with Federal Specification A-A-1192A (Type 1), WW-H-171-E (Type 1), and MSS SP-58 (Type 1).
Ordering	Specify part number and finish.

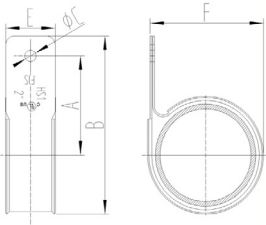
Technical Data

Part No.	Rs	A	B	Set Screw	Max. Rec (lbs)		UL	FM
	in	in	in	in	Top	Bottom		
TC1-100	3/8	3/4	1 1/8	3/8	500	250	UL	FM
TC1-120	1/2	3/4	1 1/4	1/2	950	760	UL	FM
TC1-160	5/8	1 3/8	1 1/4	1/2	1300	1080		
TC1-200	3/4	1 3/8	1 1/4	1/2	1300	1080		

Technical Data

Part No.	Rs	A	B	Set Screw	Max. Rec (N)		UL	FM
	mm	mm	mm	mm	Top	Bottom		
TC1 -M10	M10	20	29	M10	2220	1110	UL	FM
TC1 -M12	M12	20	32	M12	4220	3380	UL	FM
TC1-M16	M16	34	32	M12	5800	4800		
TC1-M20	M20	34	32	M12	5800	4800		

One Hole Pipe Strap Model: HS1



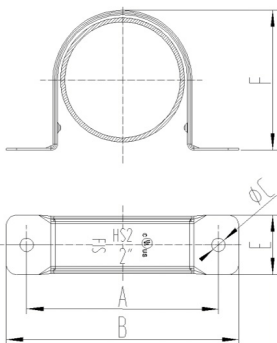
Technical Features

Size Range	3/4" through 2"
Material	Carbon Steel
Finish	Zinc Plated Steel (Hot-Dip Galvanized optional).
Service	Hanger for CPVC pipe in the horizontal position on the side of structural wood beams. It can also be used as a guide to limit movement of vertical CPVC pipe with the tab in the horizontal position.
Approvals	UL Listed
Ordering	Specify part number.

Technical Data - Dimensions (IN) Weight (LBS)

Part No.	CPVC	A	B	C	E	F	Max. Hanger Spacing (FT.)	Approx Weight/100 (lbs)	UL
	Pipe Size	in	in	in	in	in			
HS1-3/4	3/4	1 9/16	2 5/8	1/4	1 1/8	1 1/4	5 1/2	8	UL
HS1-1	1	1 3/4	2 15/16			1 1/2	6	9	UL
HS1-1 1/4	1 1/4	1 13/16	3 3/16			1 7/8	6 1/2	10	UL
HS1-1 1/2	1 1/2	2	3 9/16			2 1/8	7	12	UL
HS1-2	2	2 3/16	4			2 5/8	8	14	UL

Two Hole Pipe Strap Model: HS2



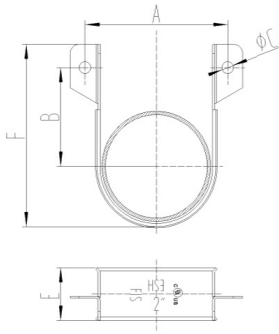
Technical Features

Size Range	3/4" through 2"
Material	Carbon Steel
Finish	Zinc Plated Steel (Hot-Dip Galvanized optional).
Service	Hanger for CPVC pipe in the horizontal position on the bottom and side of structural wood beams, composite beams. It can also be used as a guide to limit movement for pipe in the vertical position. When used on composite wood beams, web thickness must be 3/8" or greater.
Approvals	UL Listed
Ordering	Specify part number.

Technical Data - Dimensions (IN) Weight (LBS)

Part No.	CPVC	A	B	C	E	F	Max. Hanger Spacing (FT.)	Approx Weight/100 (lbs)	UL
	Pipe Size	in	in	in	in	in			
HS2-3/4	3/4	2 3/16	2 15/16	1/4	1 1/8	1 1/4	5 1/2	5	UL
HS2-1	1	2 7/16	3 7/32			1 1/2	6	6	UL
HS2-1 1/4	1 1/4	2 13/16	3 9/16			1 13/16	6 1/2	7	UL
HS2-1 1/2	1 1/2	3	3 13/16			2 1/8	7	8	UL
HS2-2	2	3 1/2	4 9/32			2 9/16	8	9	UL

Two Hole 90° Side Mount Strap Model: HS3



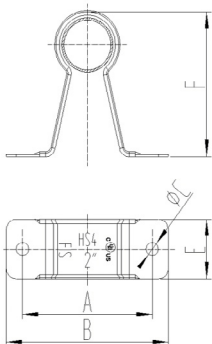
Technical Features

Size Range	3/4" through 2"
Material	Carbon Steel
Finish	Zinc Plated Steel (Hot-Dip Galvanized optional).
Service	Hanger for CPVC pipe in the horizontal position on the bottom of structural wood beams. During installation, adjust hanger mounting flanges such that pipe contacts both mounting surface and hanger, minimizing vertical pipe movement.
Approvals	UL Listed.
Ordering	Specify part number.

Technical Data - Dimensions (IN) Weight (LBS)

Part No.	CPVC	A	B	C	E	F	Max. Hanger Spacing (ft)	Approx Weight/100 (lbs)	UL
	Pipe Size	in	in	in	in	in			
HS3-3/4	3/4	1 25/32	1 1/2	1/4	1 1/8	2 5/8	5 1/2	5	UL
HS3-1	1	2 1/16	1 5/8			2 7/8	6	6	UL
HS3-1 1/4	1 1/4	2 13/32	1 3/4			3 1/4	6 1/2	7	UL
HS3-1 1/2	1 1/2	2 21/32	1 7/8			3 1/2	7	8	UL
HS3-2	2	3 1/8	2 1/8			3 7/8	8	9	UL

Two Hole Standoff Strap Model: HS4



Technical Features

Size Range	3/4" through 2"
Material	Carbon Steel
Finish	Zinc Plated Steel (Hot-Dip Galvanized optional).
Service	Hanger for CPVC pipe in the horizontal position on the bottom of structural wood beams. It can also be used as a guide to limit movement for a pipe in the horizontal/vertical position on the side of structural wood beams, composite wood beams.
Approvals	UL Listed.
Ordering	Specify part number.

Technical Data - Dimensions (IN) Weight (LBS)

Part No.	CPVC	A	B	C	E	F	Max. Hanger Spacing (ft)	Approx Weight/100 (lbs)	UL
	Pipe Size	in	in	in	in	in			
HS4-3/4	3/4	2 5/8	3 1/4	1/4	1 1/8	2 3/4	5 1/2	5	UL
HS4-1	1	2 21/32	3 5/16			3	6	6	UL
HS4-1 1/4	1 1/4	3	3 11/16			3 3/8	6 1/2	7	UL
HS4-1 1/2	1 1/2	3 5/8	4 1/4			3 5/8	7	8	UL
HS4-2	2	4	4 21/32			4 1/8	8	9	UL

rhinotek 

Gate 2, Aljada Logistics Area,
Behind Arada Project Management
Office, Near Airport Road,
Muweilah, 22436, Sharjah

rhinotek.ae

